

Scott E. Bennett, P.E.

Director



UCA College of Business
Wednesday, November 29, 2017



ACTSEP?

Arkansas Commercial Truck Safety and Education Program (ACTSEP)

- **Act 1176 of 2013**

- 15% Registration Fee
- \$2 Million / Year Set-Aside

- **Purpose**

- Improve Commercial Truck Industry Safety
- Ensure Safe Movement of Goods
 - Cooperative Public-Private Programs
 - a) Increased Enforcement
 - b) Regulatory Compliance
 - c) Industry Training
 - d) Educational Programs



Arkansas Commercial Truck Safety and Education Program (ACTSEP)

- Application Review Committee
 - Arkansas Highway Police Chief and Major
 - ARDOT's Assistant Chief Engineer for Planning
 - President of the Arkansas Trucking Association
 - Trucking Industry Representative



Arkansas Commercial Truck Safety and Education Program (ACTSEP)

- December 2, 2014 – February 2, 2015
- 1st ACTSEP Application Cycle
- University of Central Arkansas
 - Awarded \$3 million
 - Endowed Chair in Motor Carrier Management
 - 4-year Supply Chain Logistics Management Degree
 - Workforce Training





History

“We are always yapping about the ‘Good Old Days’ and how we look away back and enjoy it, but I tell you there is a lot of hooley to it.”

– Will Rogers



The Teens

- ***First Commission Created***
 - ✓ ***No Highway Department***
 - ✓ ***No Highway System***
- ***\$72,000 Total Budget***
- ***36,000 Miles of Public Roads***

Highway 71 near Bella Vista



The Twenties



Repair Shop of State
Highway Department,
Little Rock, early 1930s



- **Highway System Created**

- **Highway Department Created**

- **First Gas Tax – 1 cent per gallon**

- **200,000 Vehicles/8,800 highway miles (1,400 Paved)**

- **Highway Commission Structure Changed Twice**

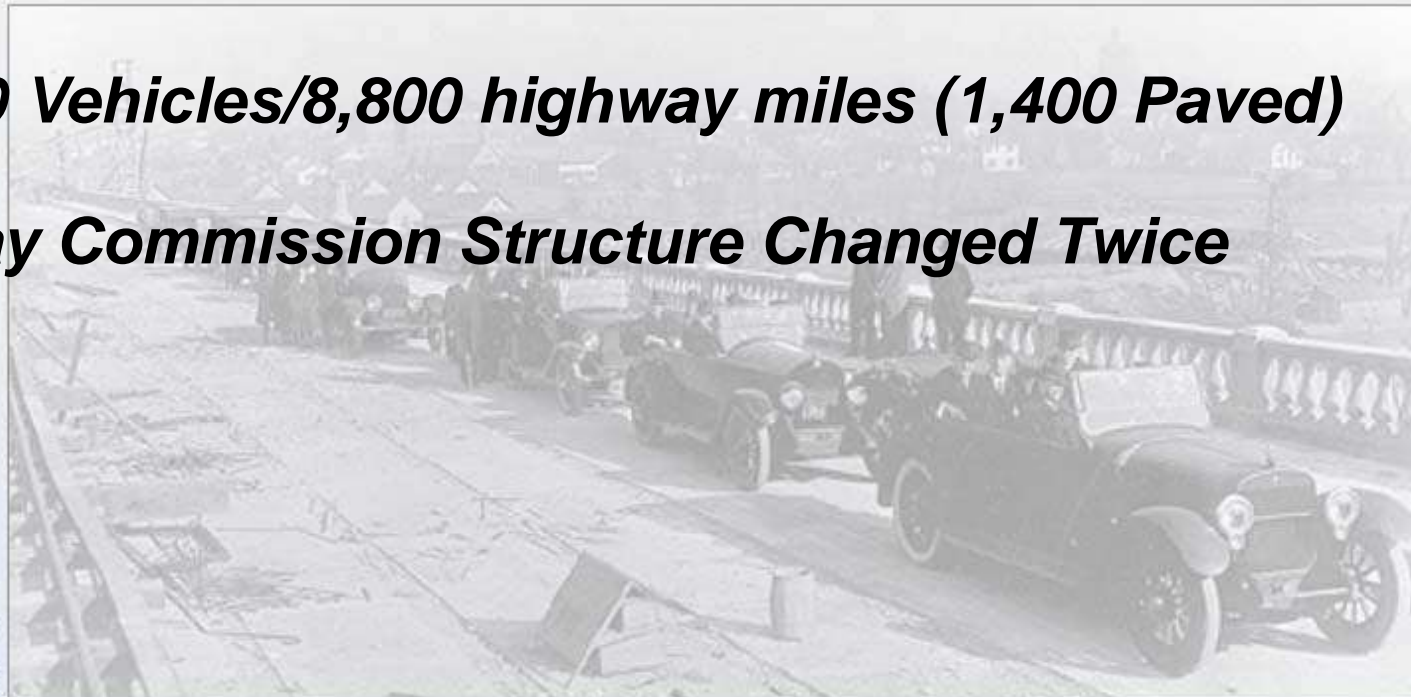
Highway Districts 1923



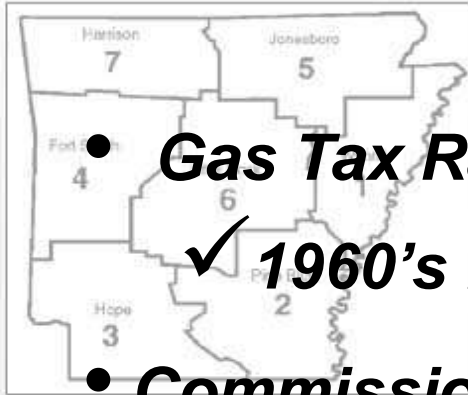
Highway Districts 1925



Broadway Bridge dedication,
1922. View is looking towards
North Little Rock



The Thirties and Forties



- **Gas Tax Raised to 6.5 cents per Gallon**

- ✓ **1960's Before Next Increase**

- **Commission Structure Changed Four More Times**



Magnet Truck, Picked up an average of 100 lbs of metal per mile

- **9,700 Highway Miles (4,900 Paved)**

- **Too much Political Influence on Highways**
– **Growing Discontent**



State Highway Department HQ, 1939





- **1951 - Highway Audit Commission Report**

- ✓ **“the advice, counsel and expert know-how which is available from the Department’s own technical and administrative staffs has scant weight indeed when they are in conflict with the political pressures and political promises of the moment.”**

- **9 Legislative Acts Restructured Commission since 1913**
- **1952 – Mack Blackwell Amendment**

Widening Hwy 67 near Malvern, 1956



The Sixties and Seventies



- **No changes to Commission Structure**
- **Department became Debt Free**

South Terminal, Little Rock, Arkansas. Lawrence Blackwell burning bonds at a ceremony in 1975.

- **Legislature transferred nearly 4,400 more miles of County Roads to Highway System**

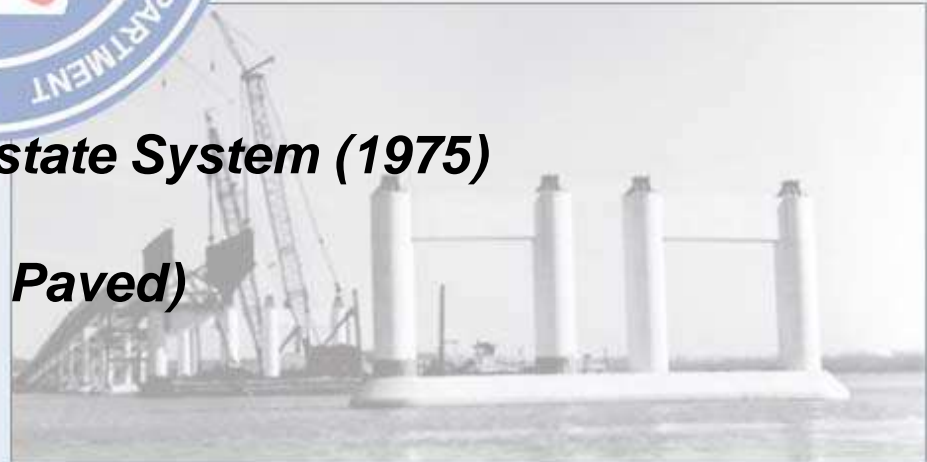


- **Department adds “Transportation” to its name – Authority Expanded**

- **1st State to Complete its Interstate System (1975)**
- **16,000 Highway Miles (15,000 Paved)**



Toad Suck Ferry on Arkansas River at Highway 60, 1970



I-430 River Bridge, 1973

The Eighties and Nineties

- **1985 – Rural Road Program – out of the mud**
- **Early Retirements – huge workforce turnover**
- **1991 – Highway Improvement Program**
- **1993 – Last Federal Gas Tax Increase**
- **1999 – Last State Gas Tax Increase**
- **1999 – Interstate Rehabilitation Program – First Highway Bond Issue in 50 years**
- **I-540 (now I-49) and I-530 Completed**
- **16,400 Highway Miles**



Section of Hwy 7 named first Scenic Byway of Arkansas.

1991 Highway Improvement Program authorized to improve or replace approximately 560 bridges.



Hopper Tunnel, 1999



- **2011 – 2nd Interstate Rehabilitation Program**
- **2012 – Connecting Arkansas Program**



Winter Weather in Dec 2000 and Jan 2001 cost almost \$40 M.

- **Governor's Working Group on Highway Funding**

- **16,400 miles State Highways**



New White River Bridge on Hwy 64 at Augusta opened in 2001.





1929
Arkansas
Highway and
Department of
Lands

1977
Arkansas State
Highway and
Transportation
Department

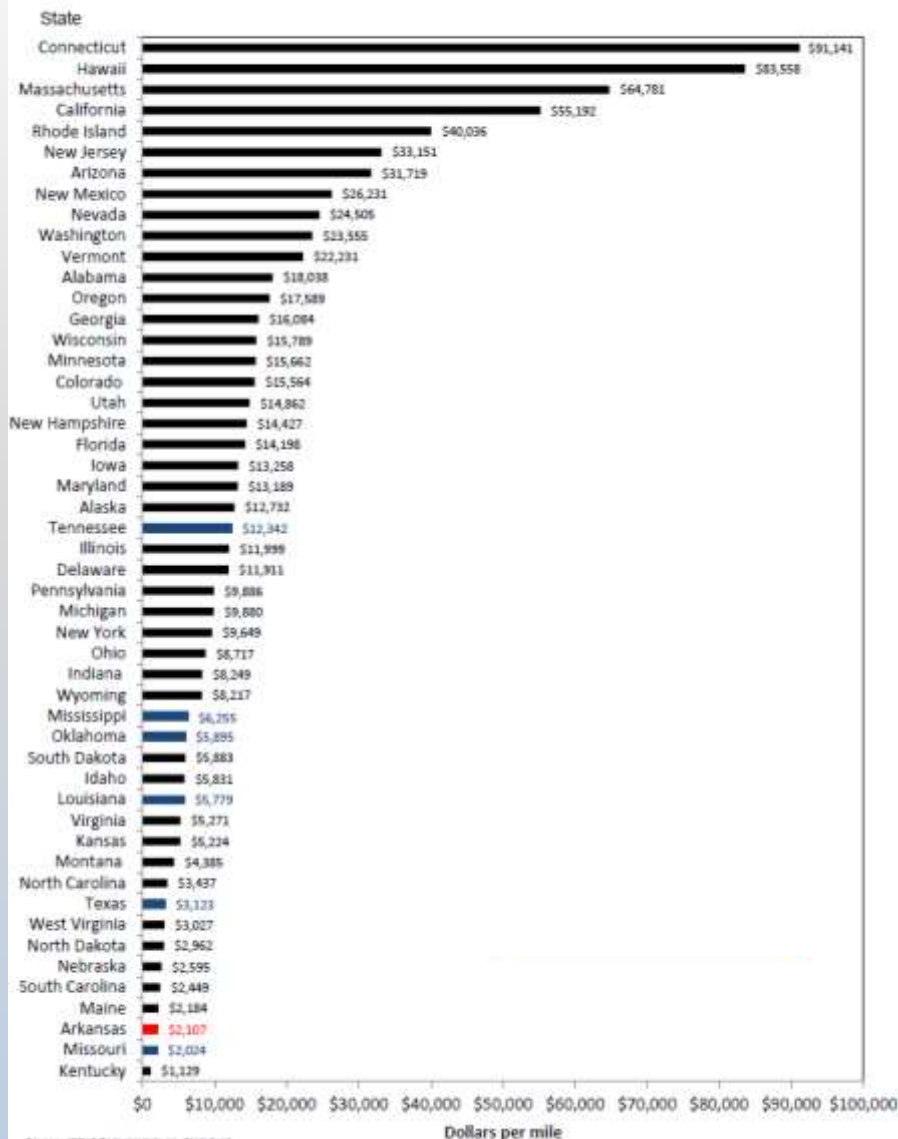
2017
Arkansas
Department of
Transportation

***Provide safe and efficient
transportation solutions to support
Arkansas' economy and enhance the
quality of life for generations to come.***

Adopted June 7, 2017

Administrative Cost Per Mile

Arkansas Ranks 48th in the Nation



Source: "2013 Federal Highway Statistics"
Note: Excludes Toll Facilities

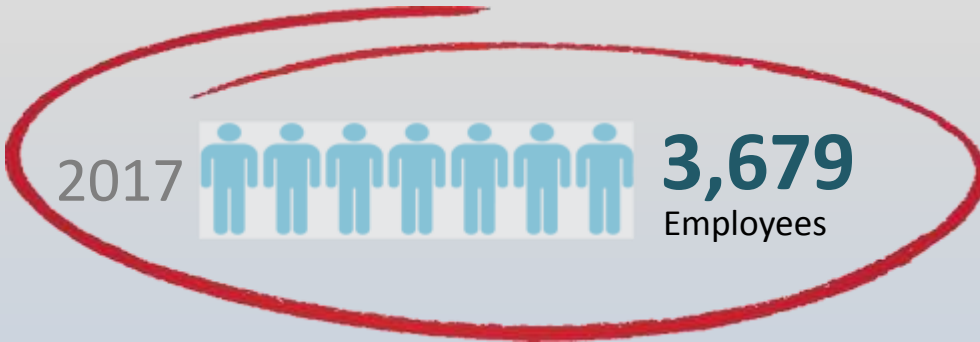
Arkansas = \$2,107

Surrounding States Average = \$4,334

National Average = \$9,224

Arkansas has the
3rd Lowest
Administrative Cost Per
Mile
in the Nation

Employment Levels Efficiency



Core Values

Safety

- Safety first in all we do

Public Service

- Focus on the greater good

Teamwork

- One vision through collaboration and communication

Quality

- Deliver reliable transportation solutions

Integrity

- Commitment to ethics and transparency

Efficiency

- Achieve maximum benefit through fiscal responsibility



About Us



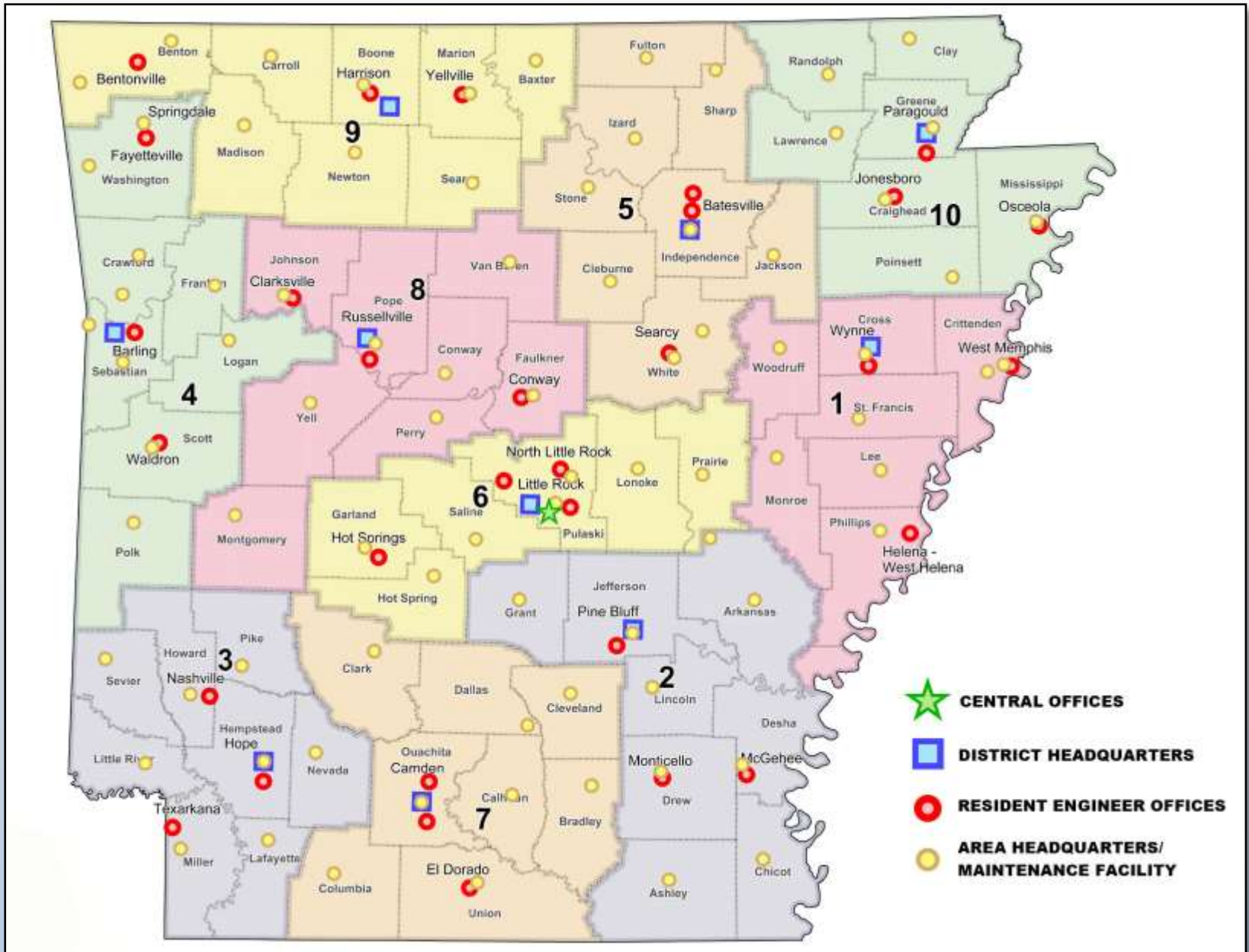
3rd Largest State Agency
(3,679 Employees)

Maintains
16,418 miles of Highway
7,335 Bridges

Central Offices in Little Rock

10 Districts Statewide

Ten Highway Districts



AR DOT Organization Chart



Scott D. Bennett

Director of Highways and Transportation

April 11, 2017

Date



Dick Trammel



Tom Schueck



Robert Moore



Alec Farmer



Philip Taldo

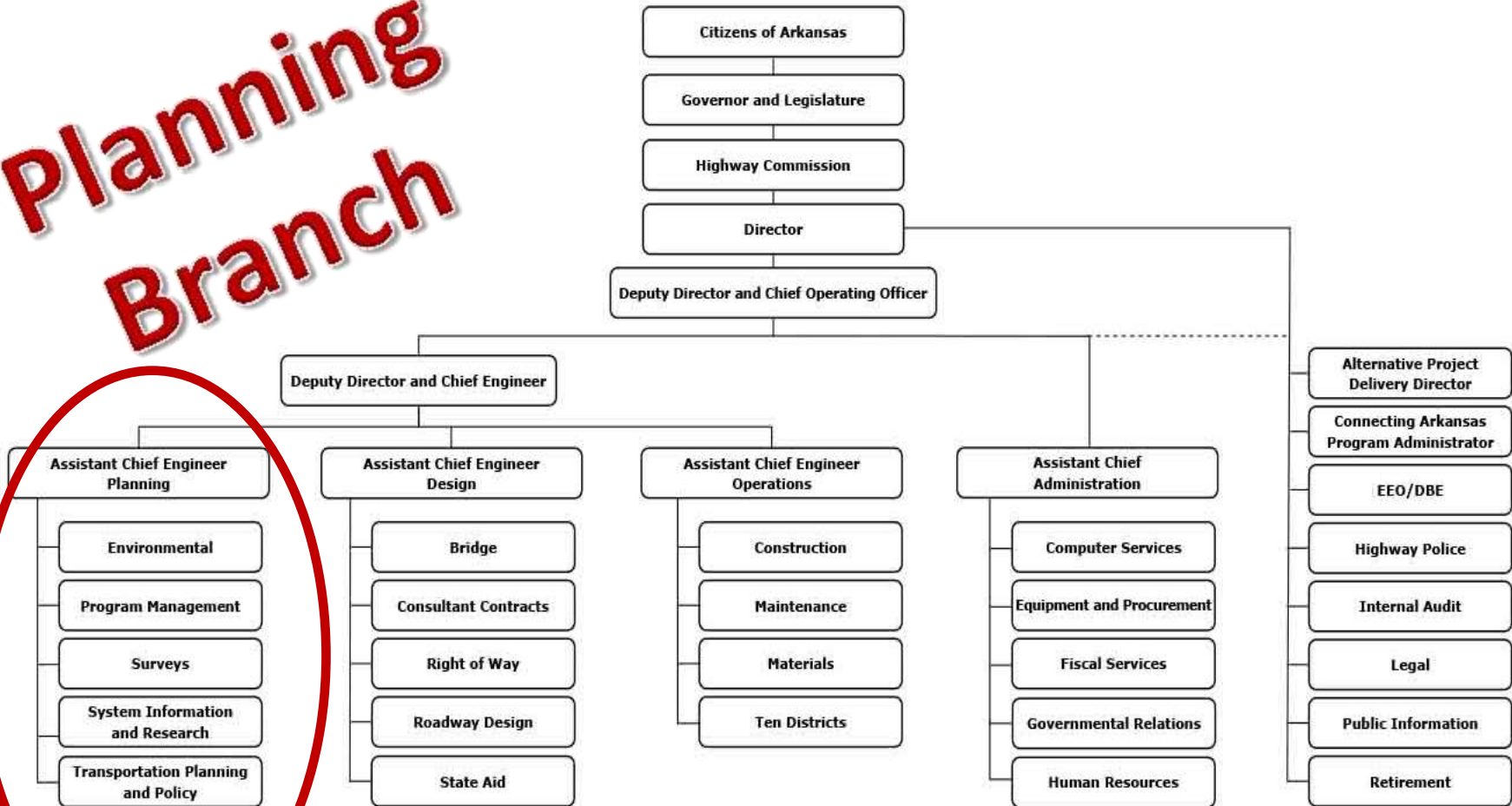


- **Planning and Scheduling**
 - System Management Analysis
 - Planning Studies
 - Statewide Transportation Improvement Program (STIP)
- **Project Development**
 - Environmental Analysis and Report
 - Surveys
 - Design
 - Right-of-Way Acquisition
 - Utility Relocation
- **Award Contract**



AR DOT Organization Chart

Planning Branch



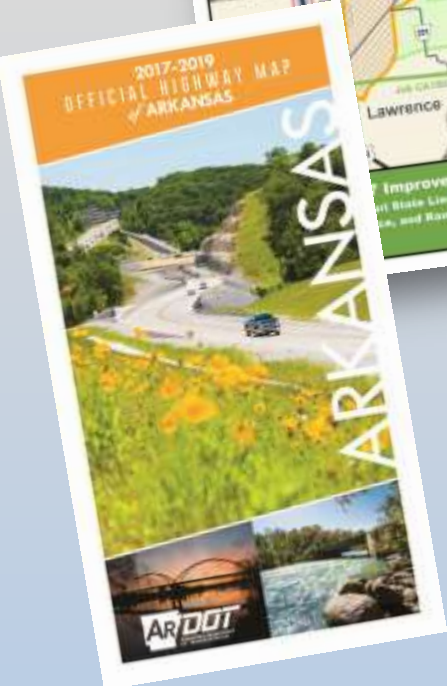
Scott D. Bennett

Director of Highways and Transportation

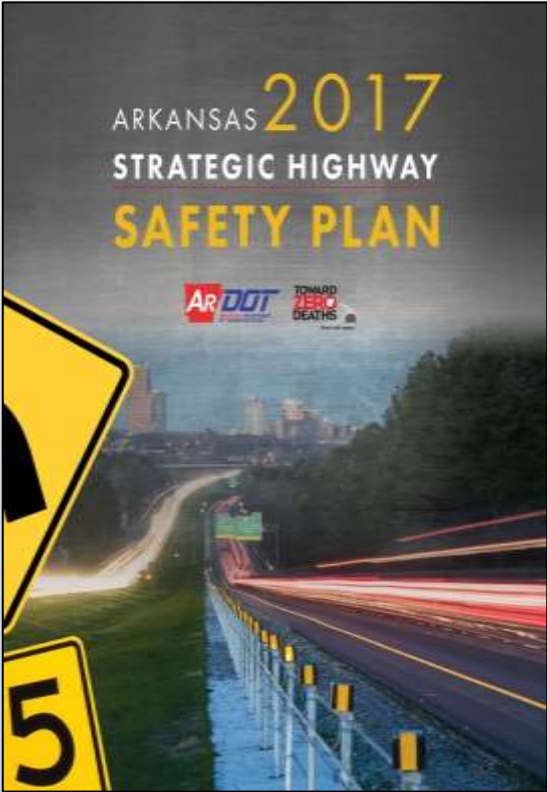
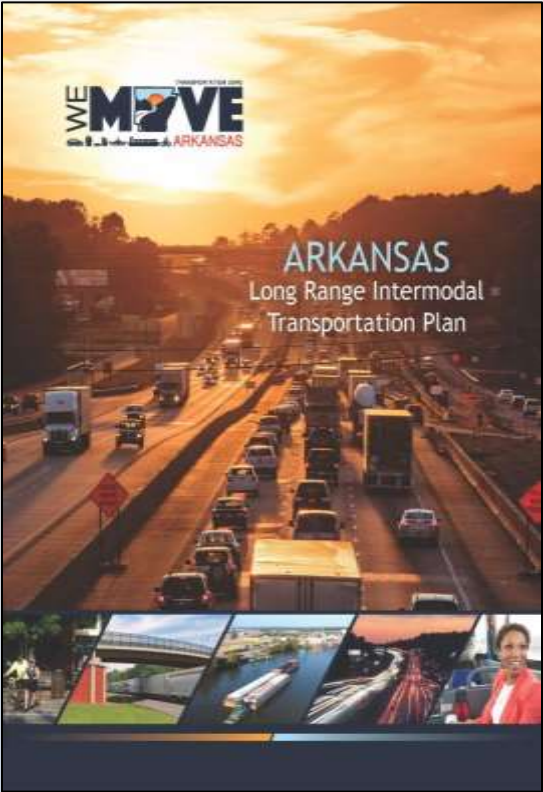
April 11, 2017

Date

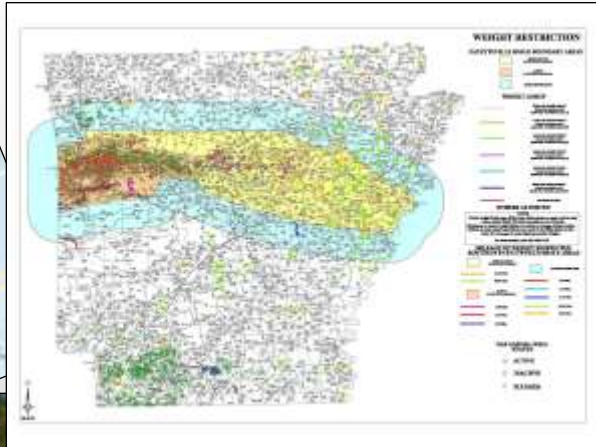
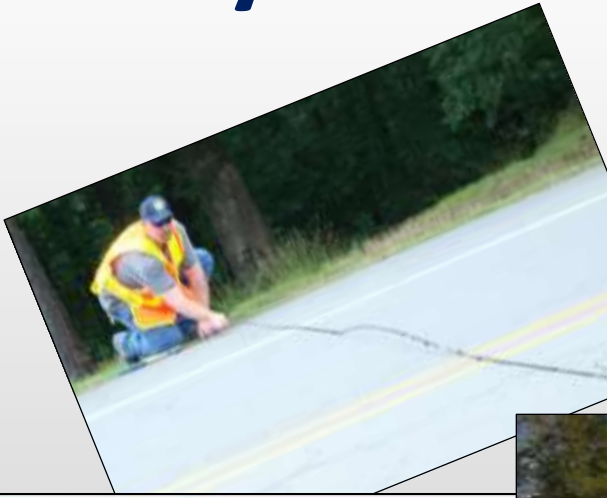
Transportation Planning & Policy



Transportation Planning & Policy




System Information & Research



ARKANSAS
2016

**ANNUAL AVERAGE DAILY
TRAFFIC ESTIMATES**

BY COUNTY



PUBLISHED APRIL 2017



Pavement Management

ARAN (Automatic Road Analyzer)



Multi-Media Highway Information System (MMHIS)

MMHIS - [Route 30 East, Section 11, Year 2012-3]

MMHIS - [Route 540 North, Section 4, Year 2012-3]

Route: 540 North

Brightness - Scale: 948.50 Max: 948.50 | Shutter - Scale: 0.43 Max: 0.43

59.473 mi | Left | Right | 60.720 mi | Left | Right | 60.720 mi

Route: 540 North Lane: 6429, File: Combined Image (Panoramic View)



Category Item Value

GPS	Latitude	36.027710
	Longitude	-94.187332
Roadway	Roadway Data Date	3/12/2012
	Count	4
	County	WASHINGTON
	Log Mile	60.095 mile
	Section	4
	Beginning Log Mile	59.990 mile
	Ending Log Mile	60.500 mile
	Length	0.520 mile
	Number of Lanes	4
	Rural/Urban	Large Urban
	Functional Classif...	1
	NHTS System Class...	On I-95 (Stat...
	Surface Type	AC/P
	Surface Width	78 ft
	Lane Width	12 ft
	Median Width	70 ft
	Right Shoulder Su...	Asphalt
	Right Shoulder Wid...	10 ft
	Left Shoulder Su...	Asphalt
	Left Shoulder Wid...	5 ft
	Job Number	
	Year Built	1999
	Average Daily Tra...	2900
	MMHIS Data Code	3112-3
	3R1 - Left Wheel P...	63.36 inches
	3R1 - Right Wheel ...	77.30 inches
	Rutting - Left Whe...	0.079 inches
	Rutting - Right W...	0.079 inches
	Grade	-2.30
	Fault Count	0
	Average Fault	0.00
	Maximum Fault	0
Bridge	Bridge Data Date	N/A
	Structure Number	N/A
	Facility On Structure	N/A
	HighestMinimumW...	N/A
	Year Built	N/A
	Main Span Type	N/A
	Approach Span T...	N/A
	Number of Appro...	N/A
	Maximum Span Le...	N/A
	Structure Length	N/A
	Curb-to-Curb Wid...	N/A
	Out-to-Out Dedi...	N/A
	Deck Condition	N/A
	Substructure Con...	N/A
	Operating Rating	N/A
	Bridge Rating	N/A
	Routine Inspecti...	N/A
	Designated Inspe...	N/A
	Year Reconstructed	N/A
	Deck Type	N/A
	Surface Type	N/A
	Sufficiency Rating	N/A
	Replacement Fun...	N/A
Job Status	Job Status Data ...	3/2/2012
	Job Number	R40048
	Project Length	8.16 mile
	Minute Order Nu...	1971-207
	Minute Order Date	
	Let Date	01/1997
	Completion Date	04/1999
	Total Cost	\$16,641,599
	Location	New Location
	Type Work	BASE & CURB
	HEP Type Work	New Location
	Included In HEP 91	Y
	Year	1/2/12
Accident	Number of Accide...	303
	Number of Fatali...	3
	Number of Injurie...	198
	Number in Const...	3
Layers	Layers Data Code	N/A
	Layer 1 Thickness	N/A
	Layer 2 Thickness	N/A

Job Status Details

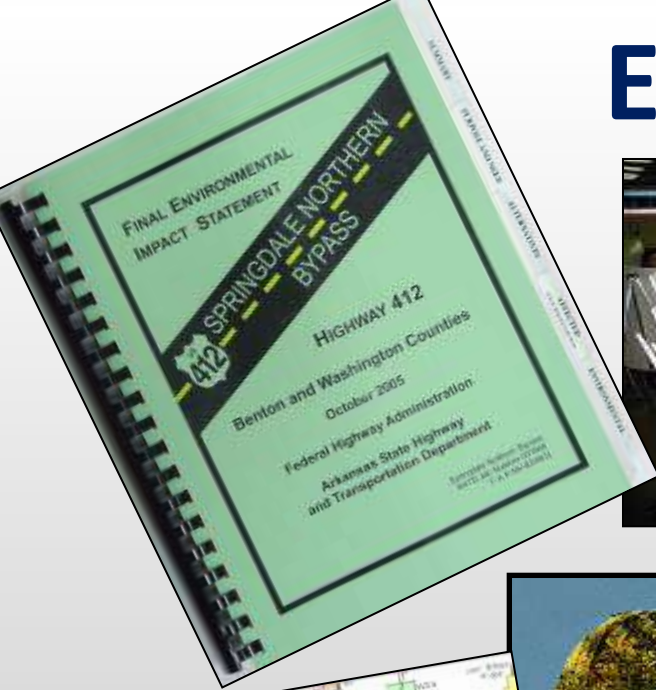
Minute Order Nu...	FC1358
Minute Order Date	
Let Date	03/1984

MMHIS - [Route 540 North, Section 4, Year 2012-3]

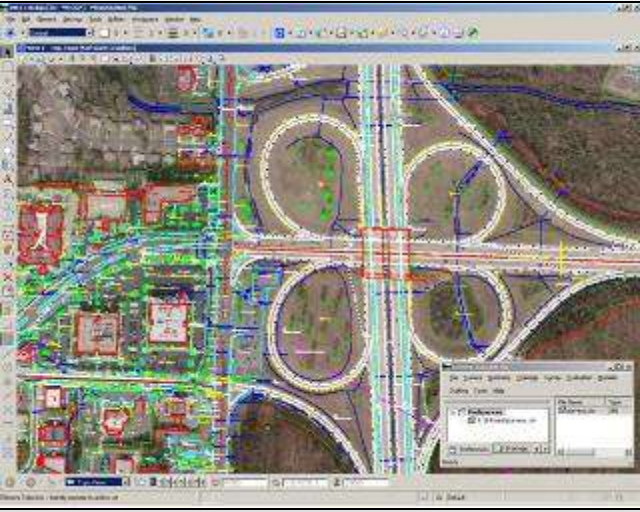
MMHIS - [Route 540 North, Section 4, Year 2012-3]

MMHIS - [Route 540 North, Section 4, Year 2012-3]

Environmental



Surveys



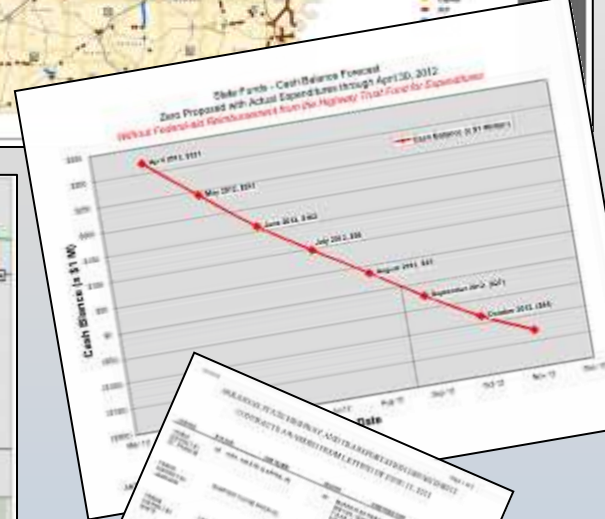
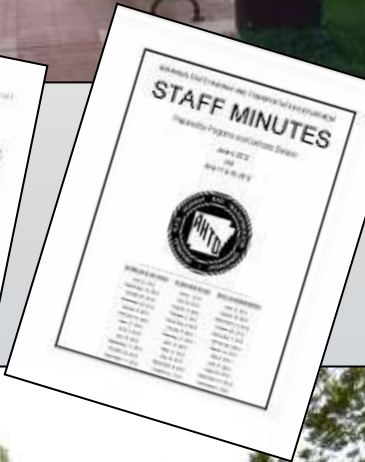
Program Management



2016-2020
Federal Fiscal Years

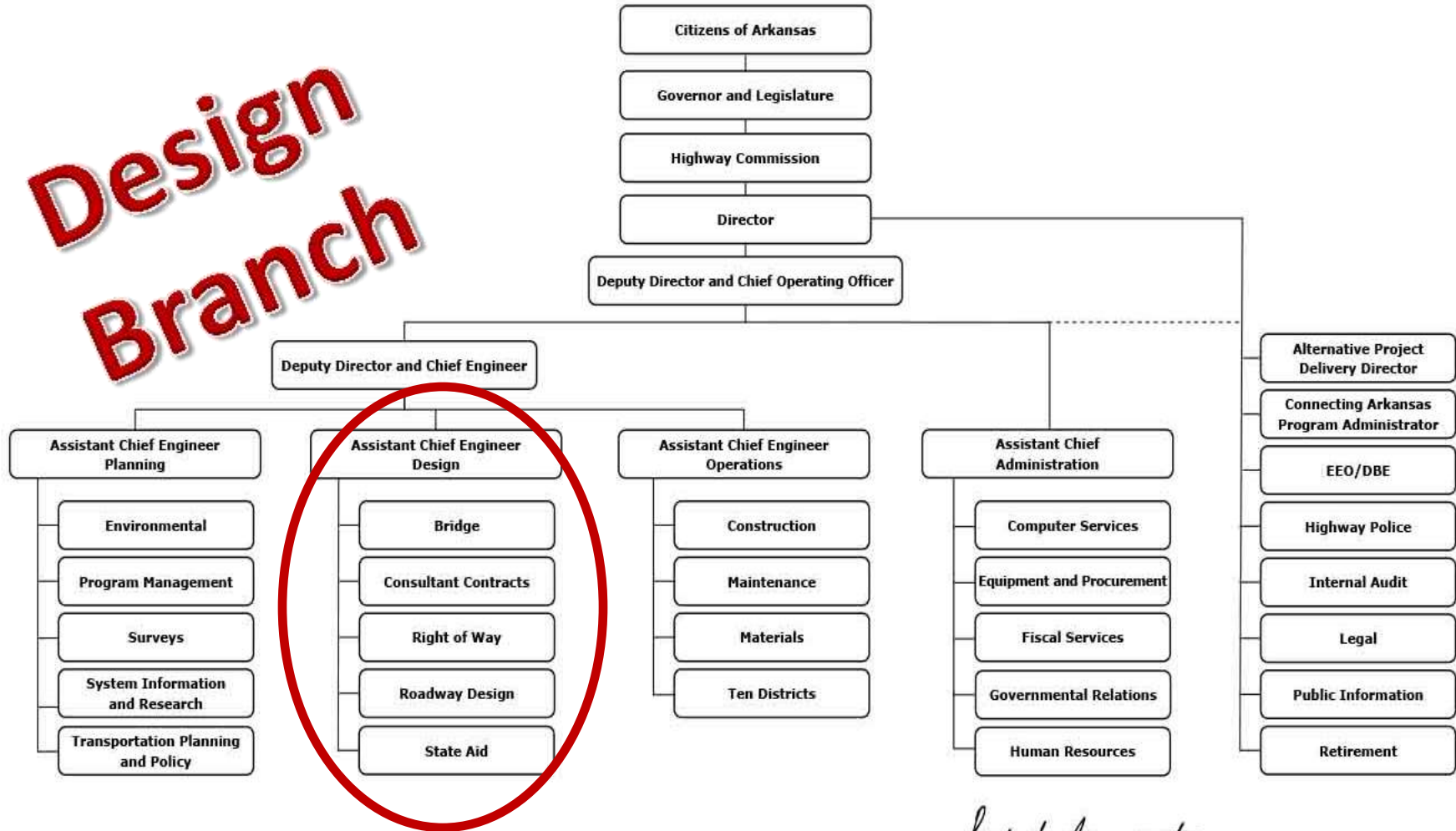
STATEWIDE TRANSPORTATION IMPROVEMENT PROGRAM
STIP

ARKANSAS STATE HIGHWAY AND TRANSPORTATION DEPARTMENT
Presented by the Arkansas State Highway & Transportation Department
in compliance with Title 23, ARS, § 2-101
Revised 11/2015



AR/DOT Organization Chart

Design Branch



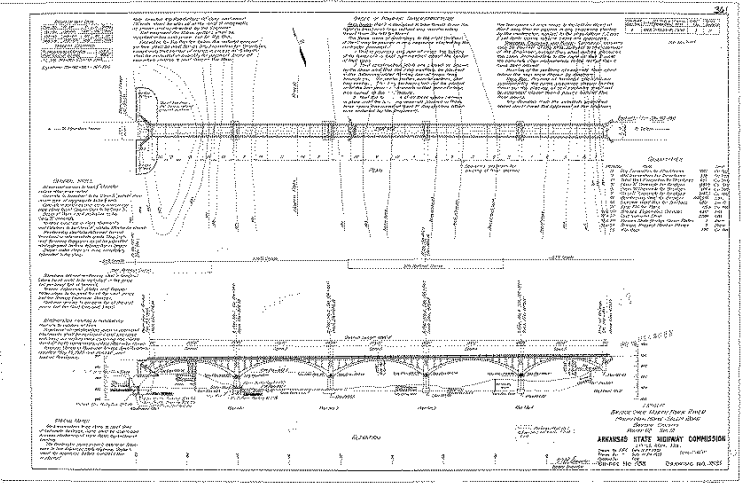
Scott D. Bennett

Director of Highways and Transportation

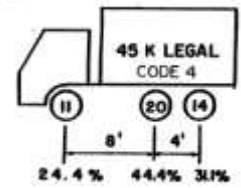
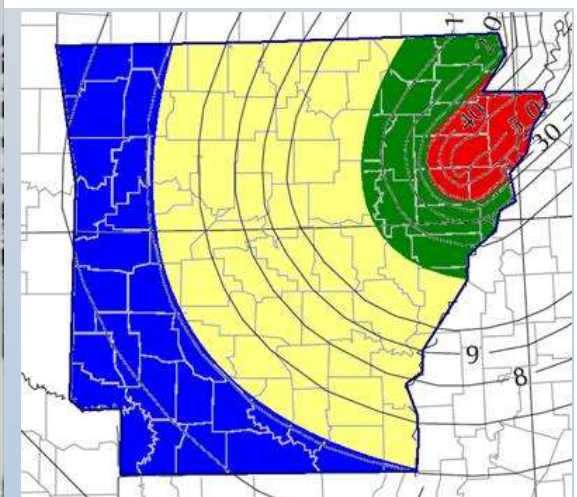
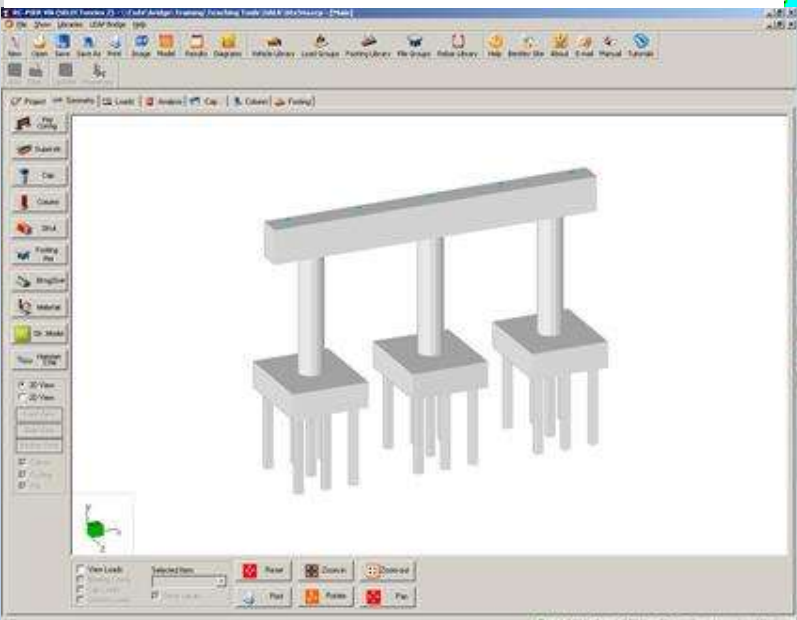
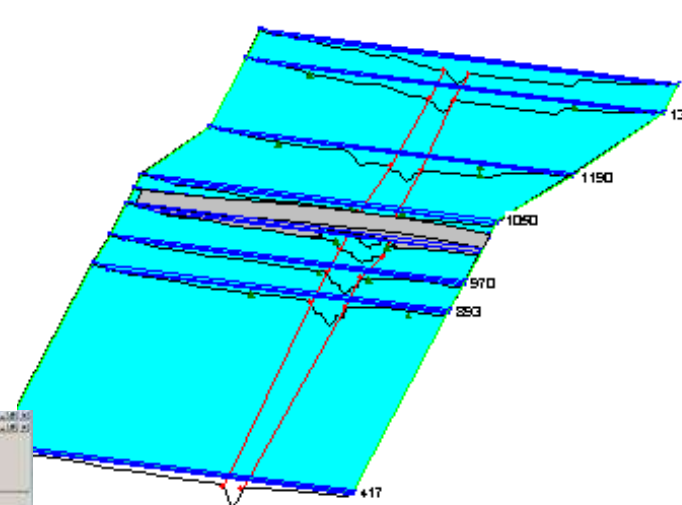
April 11, 2017

Date

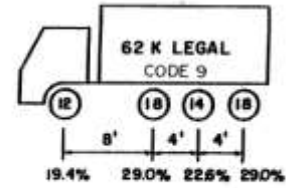
Bridge Design



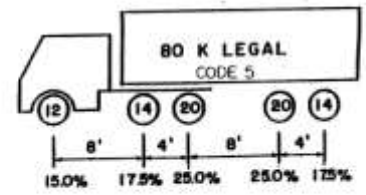
Job 050013, Tickleman Ditch (Ditch # 10) Plan: Plan 12 7/9/2004 7:28:26 AM
Geom: New Model



Code 4 Vehicle

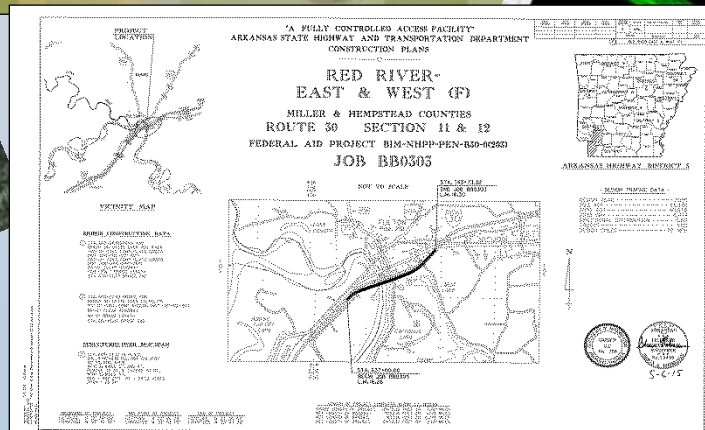
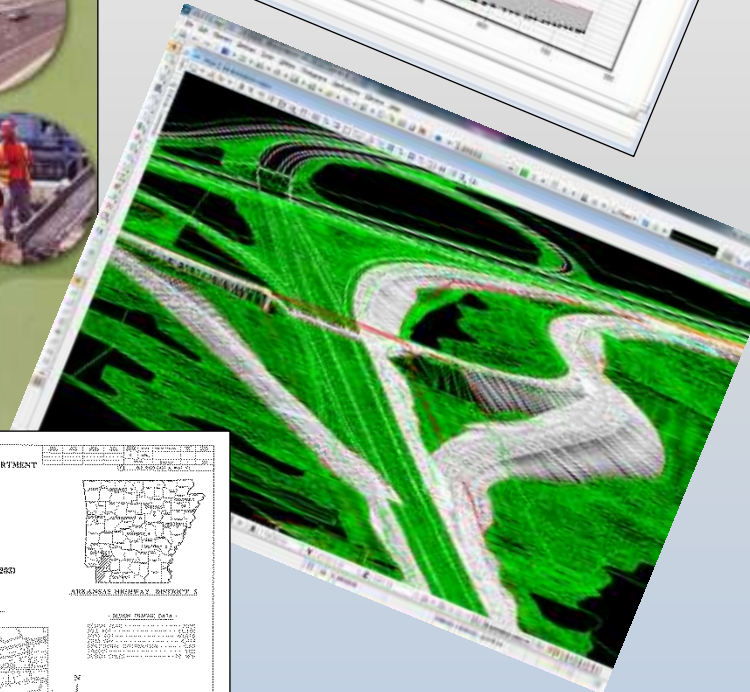
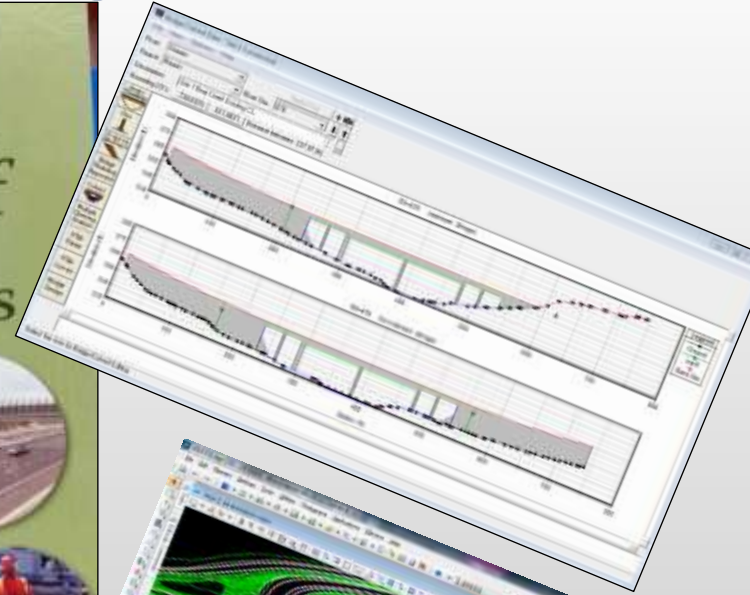
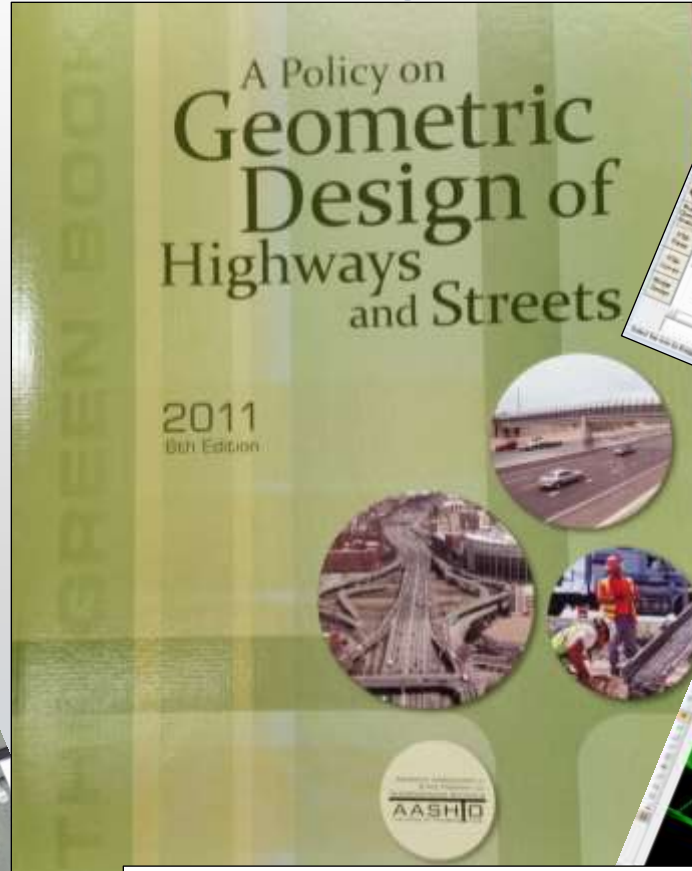


Code 9 Vehicle

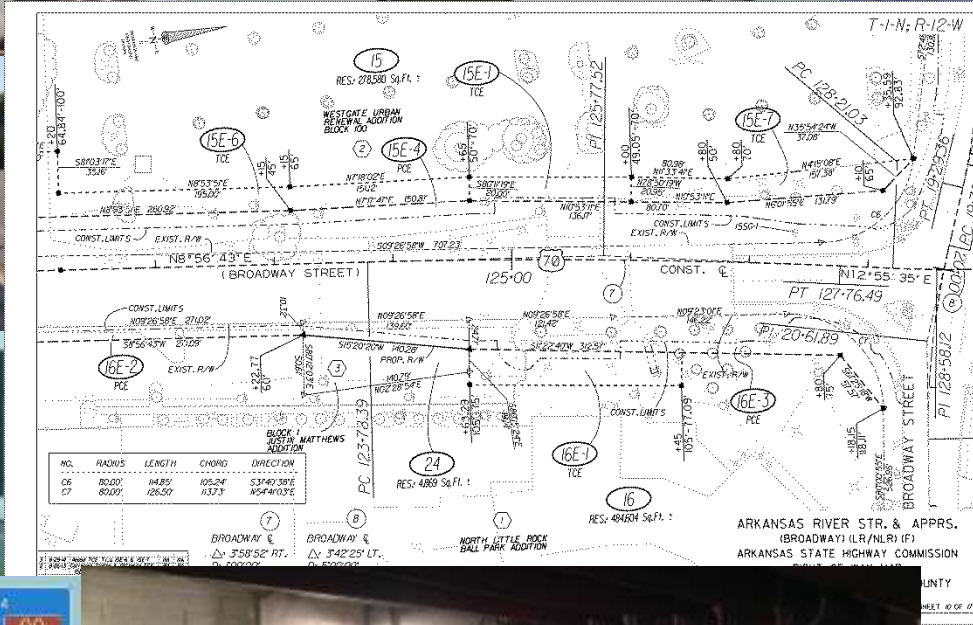


Code 5 Vehicle

Roadway Design

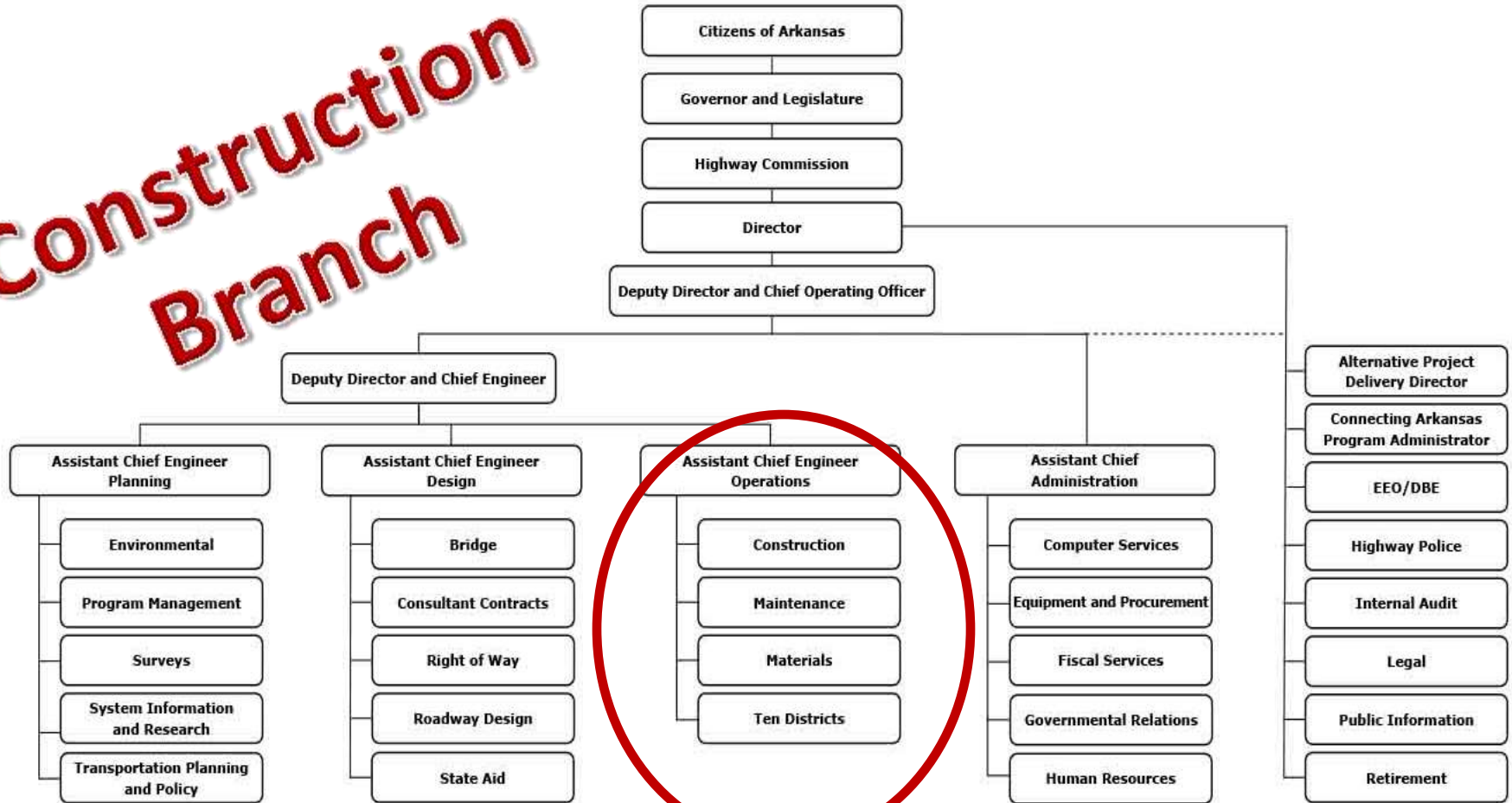


Right of Way



AR/DOT Organization Chart

Construction Branch



Scott D. Bennett

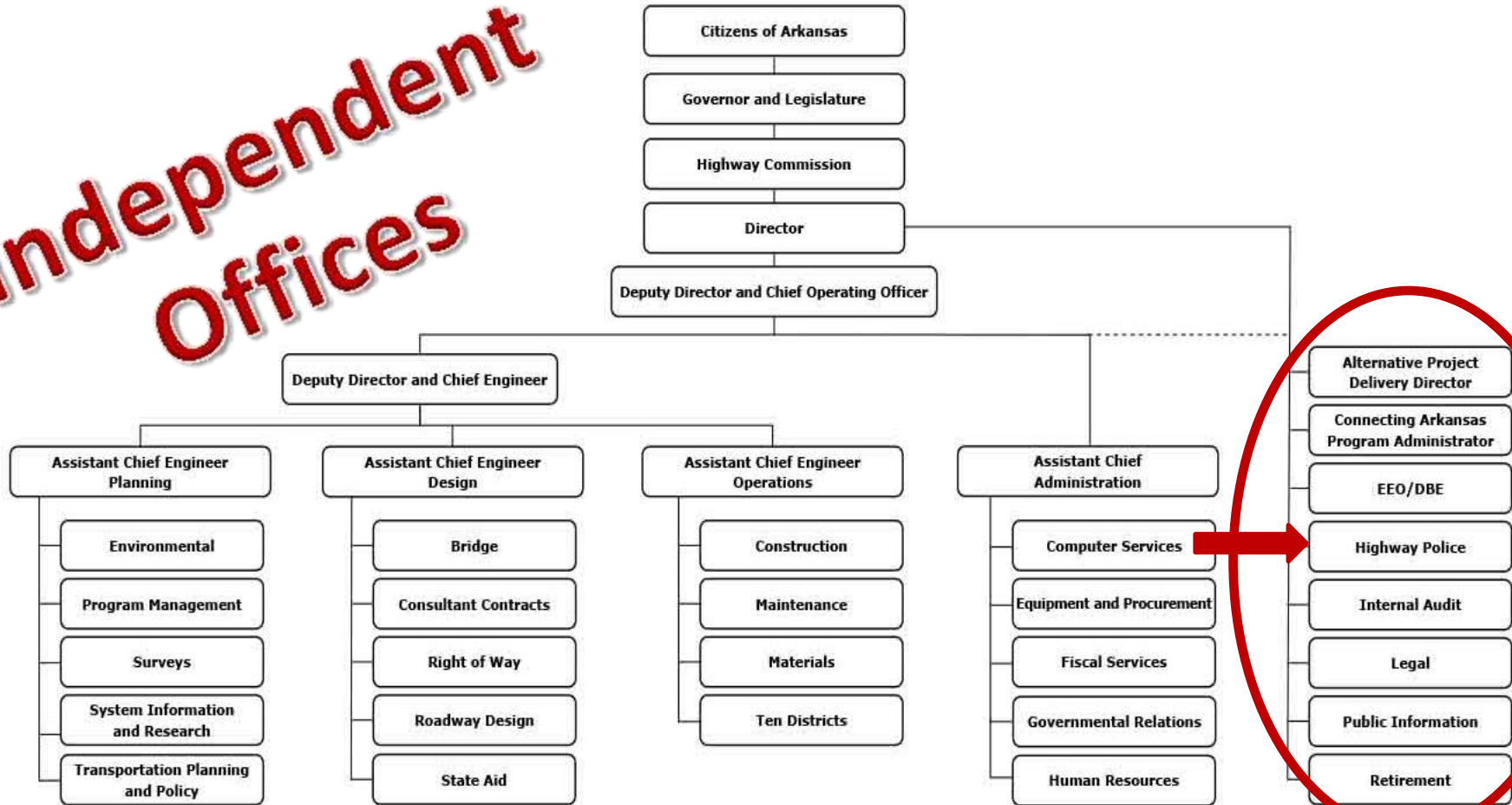
Director of Highways and Transportation

April 11, 2017

Date

ARDOT Organization Chart

Independent Offices



Scott D. Bennett

Director of Highways and Transportation

April 11, 2017

Date



Highway Police

Arkansas Highway Police







Promises Made



Promises Kept

1999 IRP

- 50 Projects
- 356 Miles
- \$973 Million



2011 IRP

- 83 Projects
- 494 Miles
- \$1.51 Billion



2012 CAP

- 36 Projects
- 185 Miles
- \$1.9 Billion





Funding

AR DOT Revenue

Average for State Fiscal Years 2016-2020

	TOTAL (x \$1 million)	Percent (%)
RECEIPTS		
Motor Fuels Revenue		
Gasoline	21.5 cents per gallon	
Diesel	22.5 cents per gallon	
LPG	16.5 cents per gallon	
CNG	5.0 cents per gallon	
Sub-Total	\$ 456.9	65.1%
Motor Vehicle Registration Fees		
Automobile & Pickups, Heavy Trucks	\$17 - \$30 / Year	
Commercial Vehicles	\$39 - \$1,350 / Year	
Sub-Total	\$ 139.1	19.8%
Special Permit Fees	\$ 16.5	2.3%
Natural Gas Severance Tax	\$ 30.9	4.4%
Title Transfer Fees	\$ 3.9	0.5%
Operator's License Fees, Drive-Out Fees & Intransit Fees	\$ 4.0	0.6%
Unified Carrier Registration Fees	\$ 1.9	0.3%
Other Revenue	\$ 48.8	6.9%
TOTAL RECEIPTS		\$ 701.8

ARDOT Revenue

Average for State Fiscal Years 2016-2020

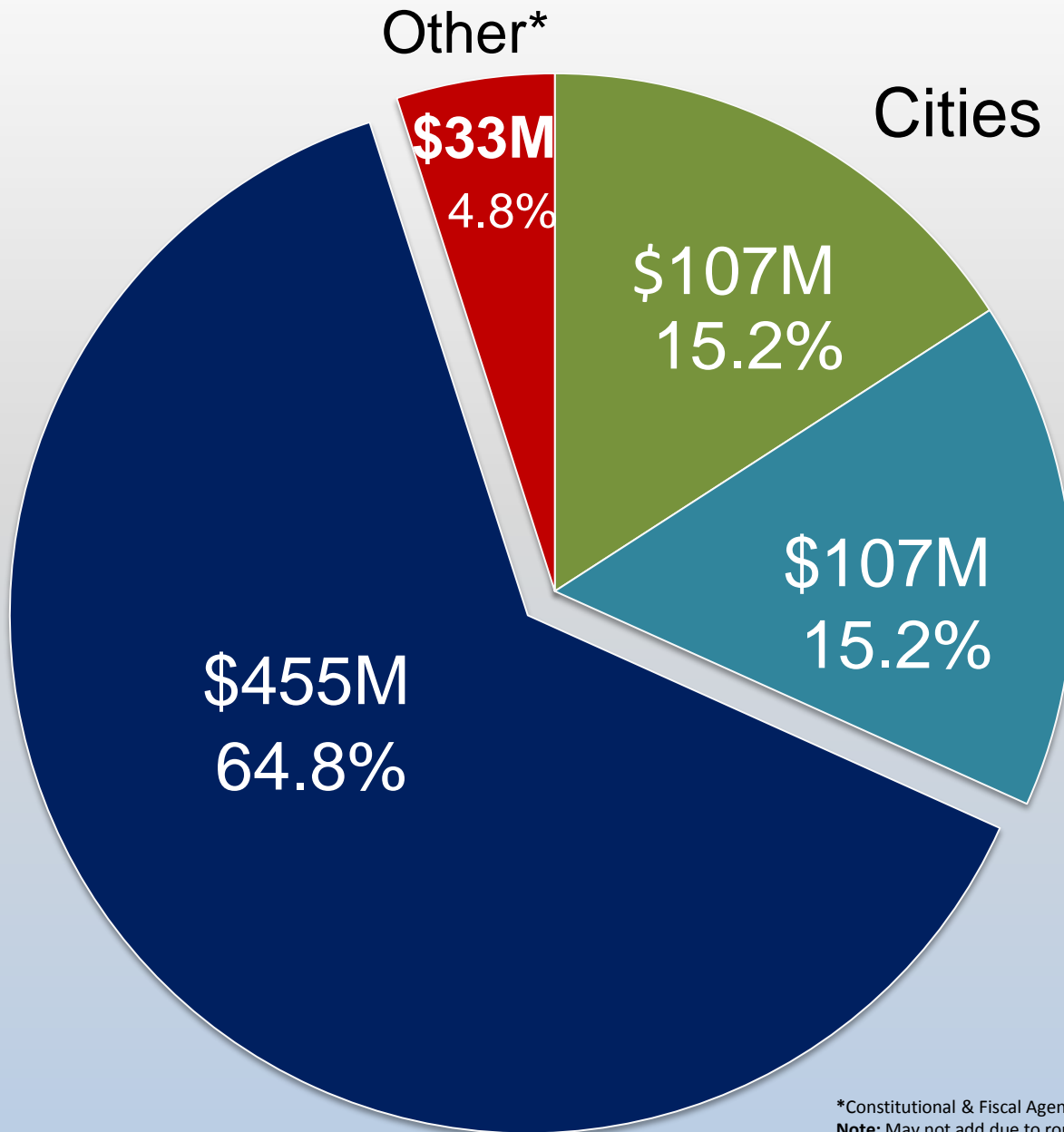
	TOTAL (x \$1 million)	Percent (%)
DISTRIBUTION		
Constitutional & Fiscal Agencies	\$ (20.1)	8.2%
Non-Highway Uses	\$ (13.4)	5.4%
State Aid Roads	\$ (20.1)	8.2%
State Aid Streets	\$ (20.1)	8.2%
County Roads	\$ (86.5)	35.1%
City Streets	\$ (86.5)	35.1%
TOTAL DISTRIBUTION \$ (246.7)		

AR DOT Revenue

Average for State Fiscal Years 2016-2020

	TOTAL (x \$1 million)	Percent (%)
TOTAL RECEIPTS	\$ 701.8	
TOTAL DISTRIBUTION	\$ (246.7)	
STATE HIGHWAYS	\$ 455.1	64.8%

Average Annual Highway User Revenue Distribution



Counties

*Constitutional & Fiscal Agencies and Non-Highway Uses.
Note: May not add due to rounding



Estimated Average Annual Construction Funds Fiscal Years 2016-2020

Net Federal Funds (Est. Average Annual Revenue from FAST Act)..... \$ 535 million

State Highway Funds (Est. Avg. Annual Revenue 2016-2020)..... \$ 455 million

Total Federal and State Highway Funds..... \$ 990 million

Less Federal Funds for:

Fixed Budgeted Expenditures (Maintenance, Administration and Operations) \$30 million

Non-Construction Programs

Statewide Planning & Research \$11 million

Metropolitan Planning \$2 million

Surface Transportation Set Aside - Transportation Alternatives Program \$10 million

Surface Transportation Set Aside - Recreational Trails Program \$2 million

Right-of-Way, Utilities \$25 million

Obligation Limitation \$25 million

Total Reduction - Federal Funds (\$ 105) million

Less State Funds for:

Fixed Budgeted Expenditures (Maintenance, Administration and Operations) \$318.0 million

State Match for Non-Construction Programs (State Planning & Research) \$3.0 million

Total Reduction - State Funds (\$ 321) million

Less Federal and State Funds for IRP Commitment:

Federal Interstate Maintenance Funds \$58.0 million

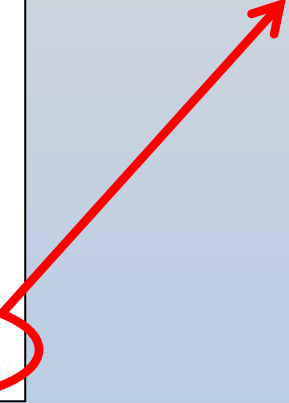
4¢ Diesel Fuel Tax \$17.0 million

Federal and State Funds to Supplement IRP \$42.0 million

Total Reduction - Federal and State Funds for IRP Commitment (\$ 117) million

Total Federal and State Funds Available for Highway Construction..... \$ 447 million

\$ 447,000,000



Funding Versus Needs

Arkansas State Highway Needs

Verified by
Arkansas
Legislative Audit

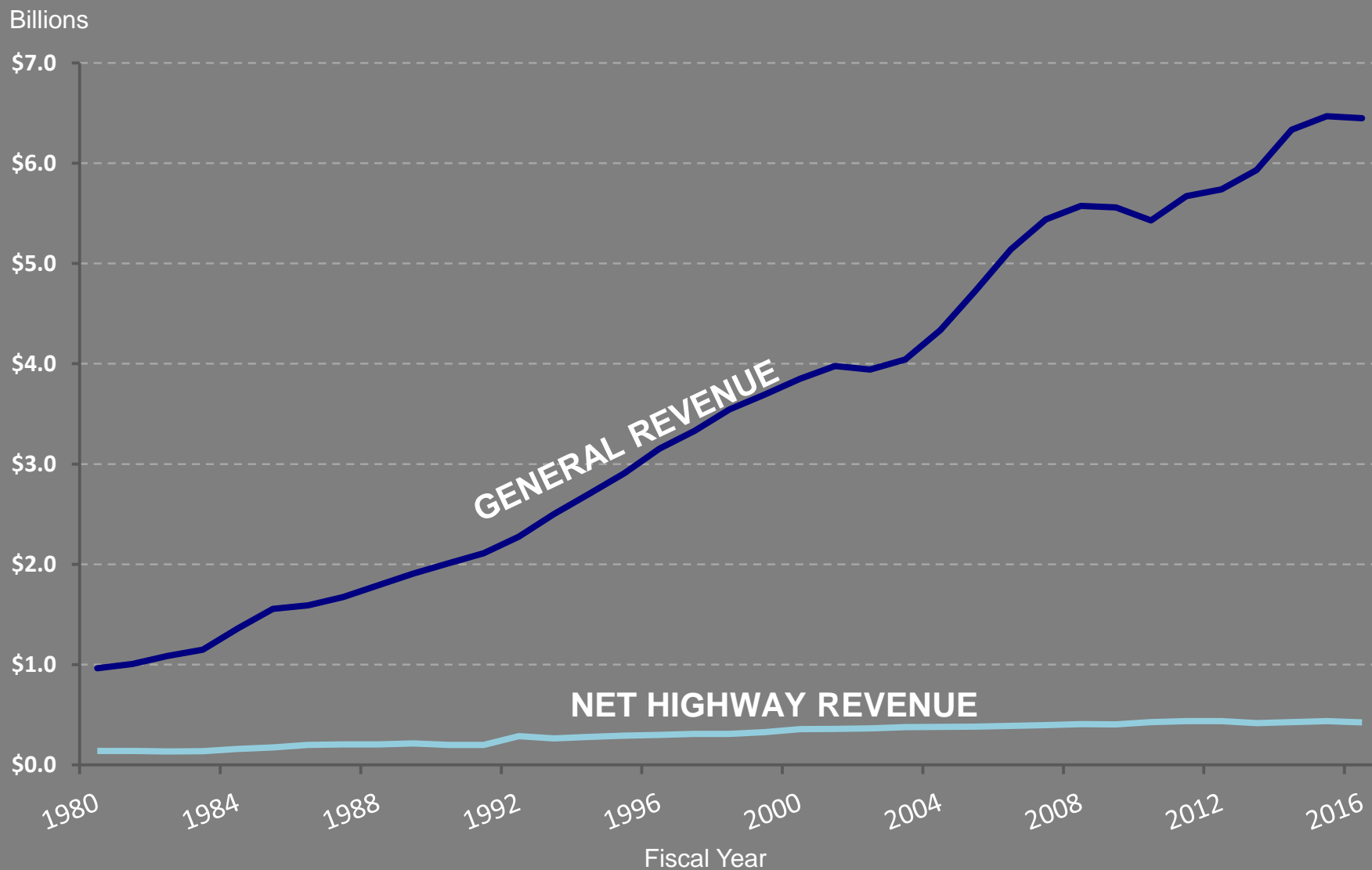
Annual Needs Next 10 Years Versus Annual Revenue Available Through 2020			
System Preservation			
	Pavement	\$387,000,000	
	Bridges	\$117,000,000	
	Total System Preservation	\$504,000,000	
Capacity Improvements for Congestion Relief		\$305,000,000	
Safety Improvements		\$ 86,000,000	
Maintenance			
	Equipment Upgrades	\$ 19,000,000	
	Facilities Upgrades	\$ 8,000,000	
	Intelligent Transportation Systems (ITS)	\$ 3,000,000	
	Total Maintenance	\$ 30,000,000	
Total Annual Funds Needed for Highway Construction Plan		\$925,000,000	
Annual Funds Available for Highway Construction through the FAST Act (does not include funds committed to Interstate rehabilitation = \$117,000,000 annually)			\$447,000,000
Shortfall for Needs		\$478,000,000	

Capital Improvement Goals

Identified Capital Improvement Projects

Four Lane Grid System	\$ 12,697,000,000
New Location / New or Modified Interchanges	\$ 921,000,000
Other Major Widening	\$ 258,000,000
Grand Total	\$ 13,876,000,000

General Revenues vs ARDOT Net Highway Revenues



Excludes County & City Aid funds | Excludes CAP funds

THEN

22 years ago, in 1995,
33 miles of Highway
could be widened.

NOW

As of 2015, using the
same resources, only
15 miles of Highway
could be widened.



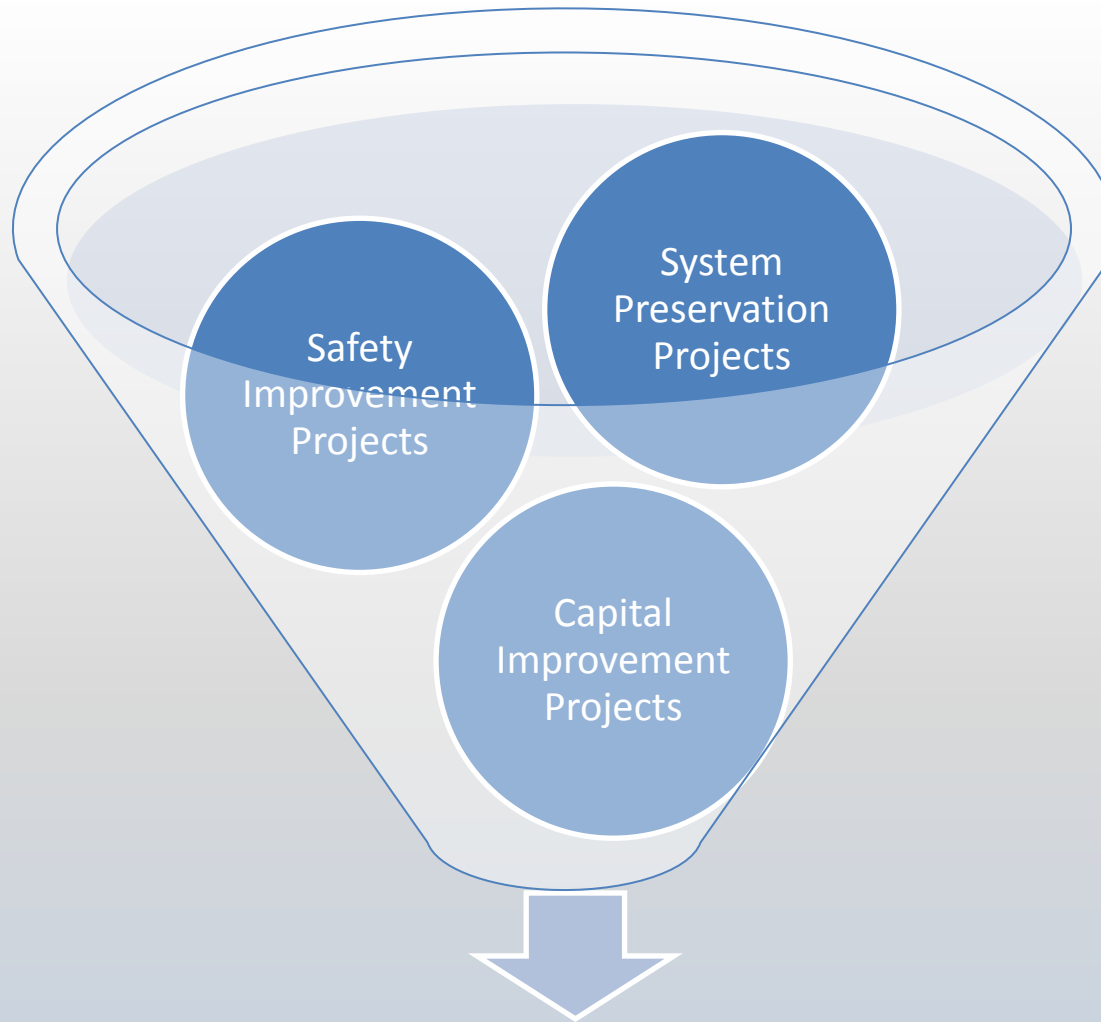
THEN

22 years ago, in 1995,
200 miles of Highway
could be overlaid.

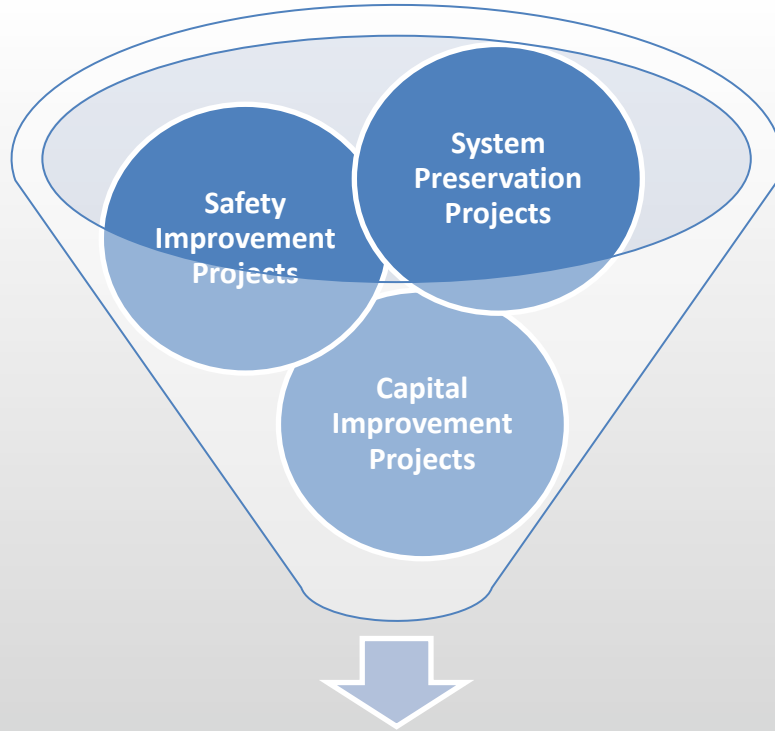
NOW

As of 2015, using the
same resources, only
54 miles of Highway
could be overlaid.





Prioritized Within the Funding Available
\$447 Million



**Prioritized
Within the
Funding
Available
\$447 Million**

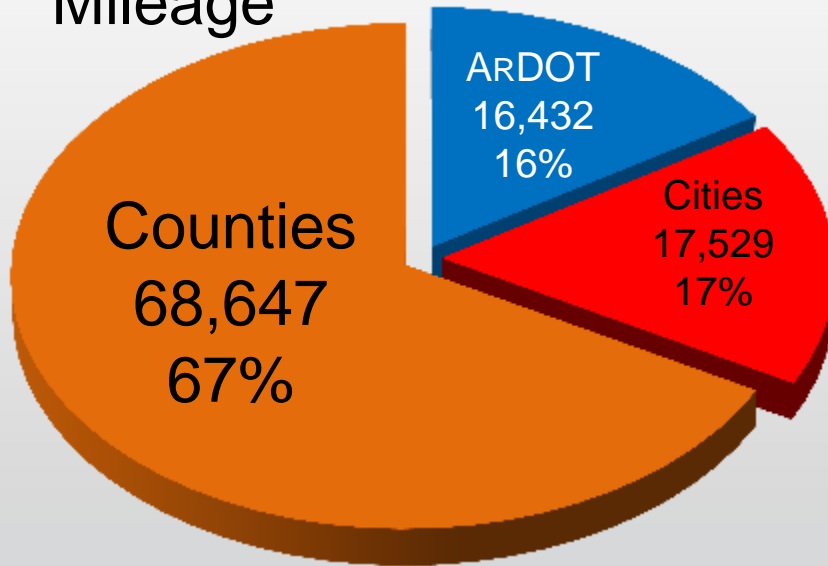
Highway Traffic



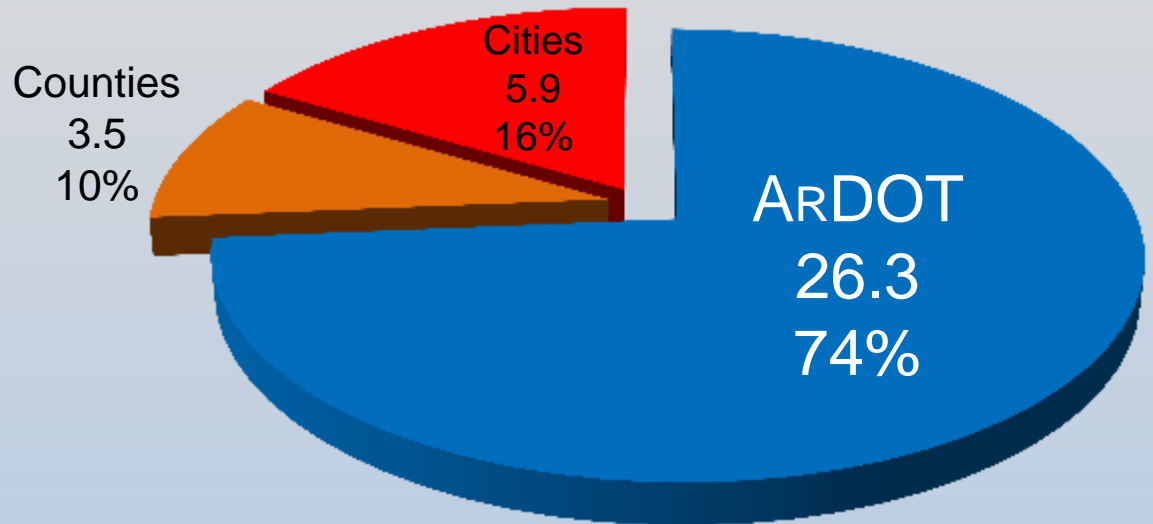
and Condition

Distribution of Arkansas Miles

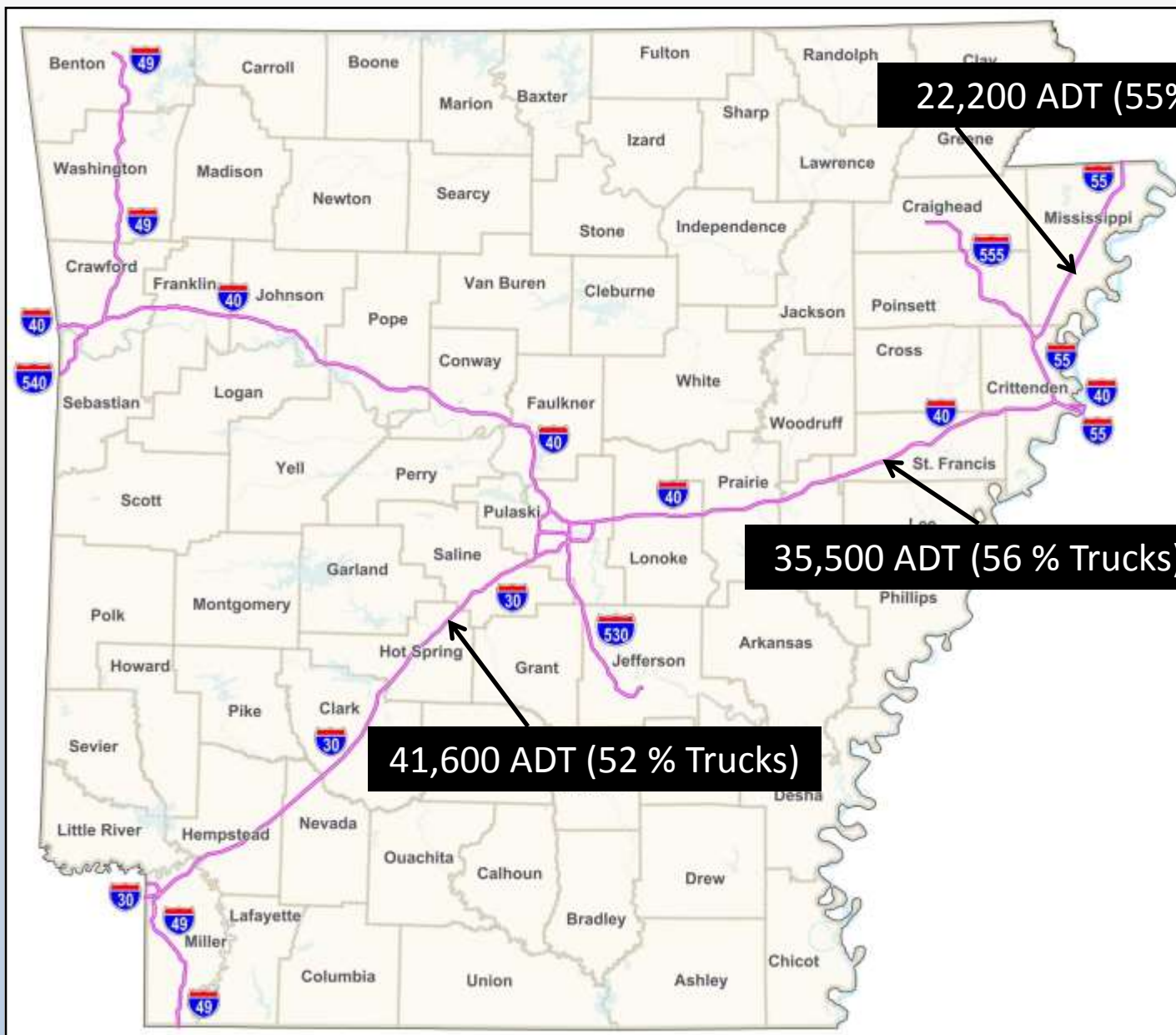
Mileage



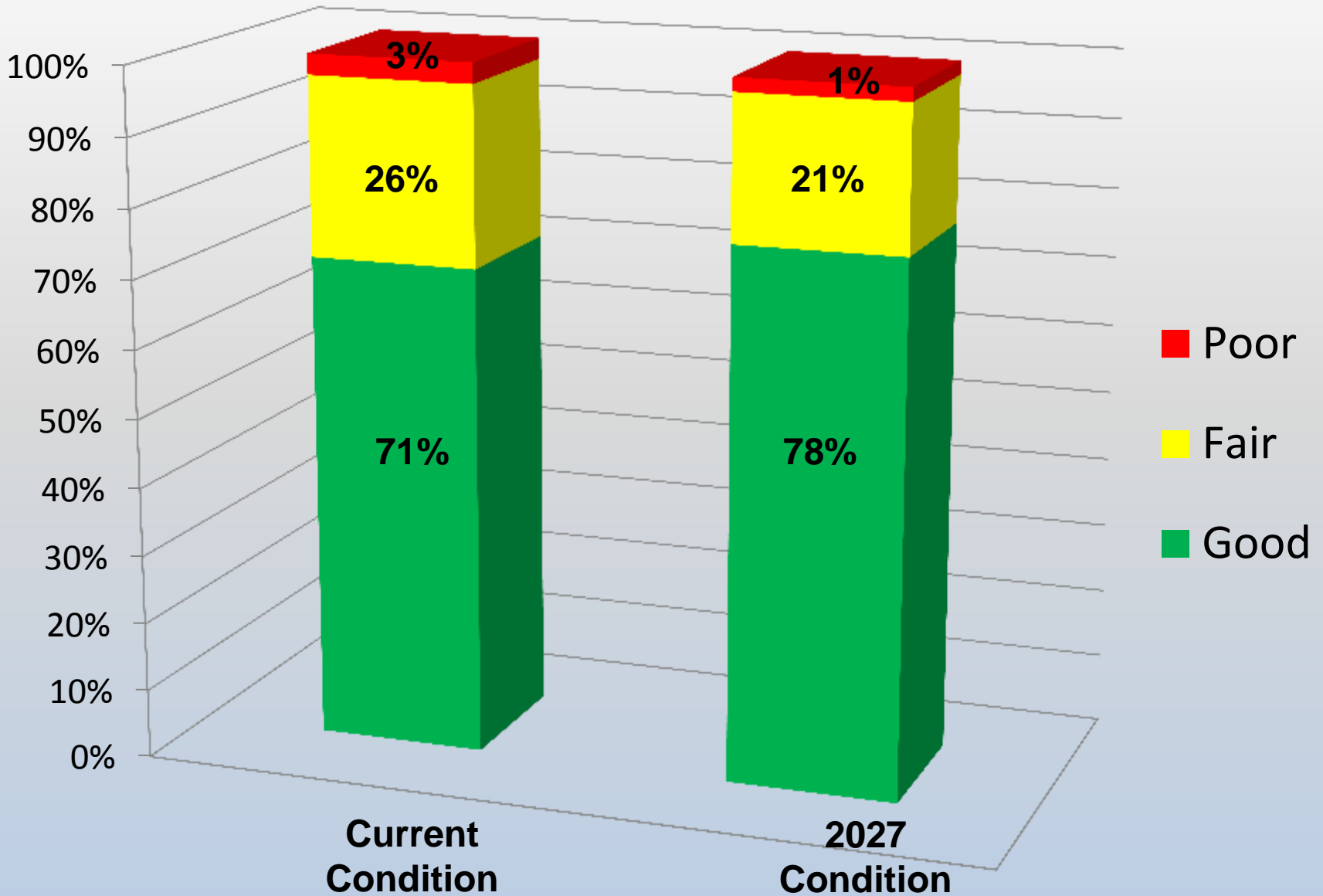
2016 Annual Vehicle Miles Traveled (Billions)



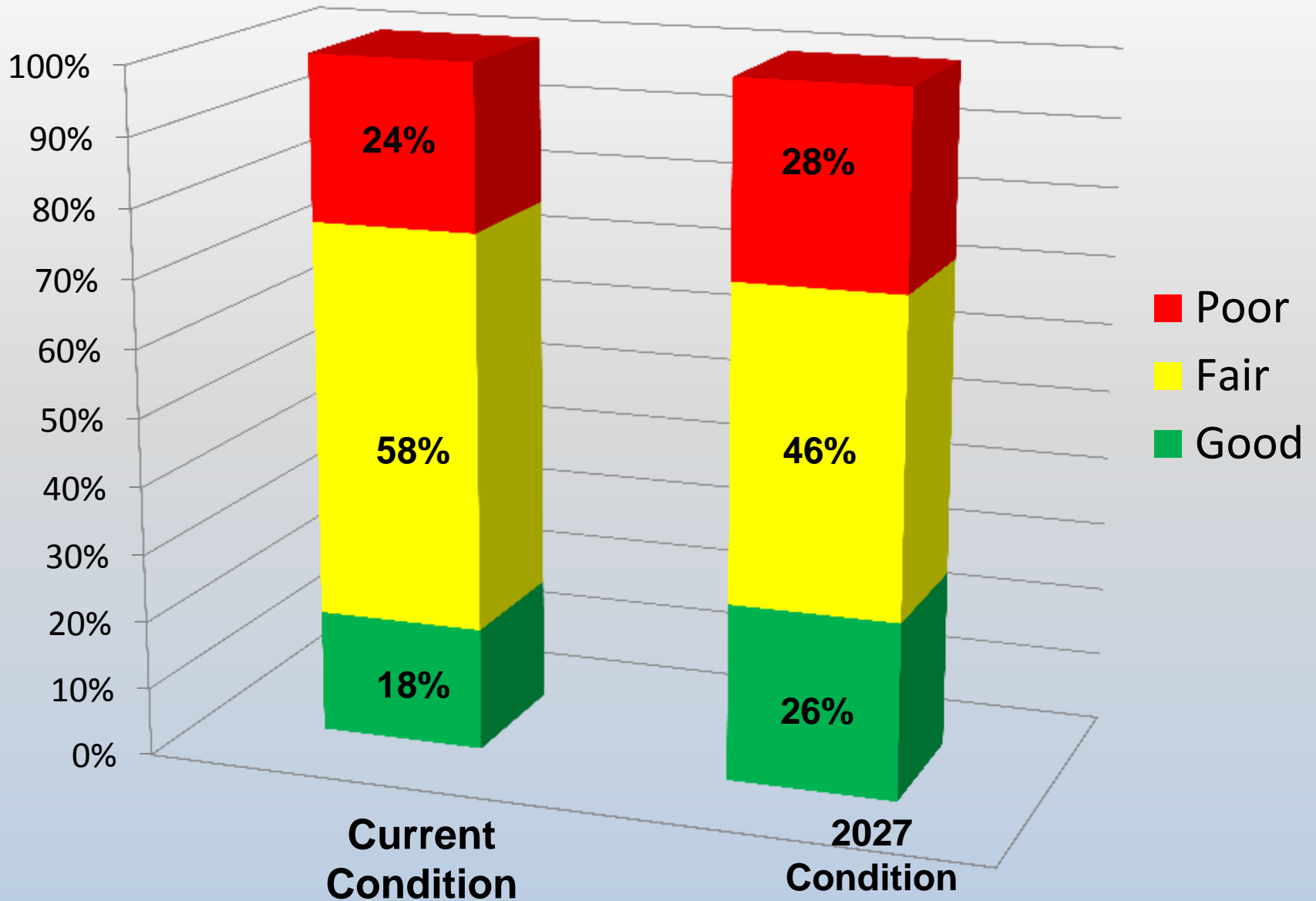
Arkansas Highway Traffic



Interstates



All State Highways – Including Interstates



Pay a **Little** Now



Overlay
\$100,000
per lane mile

Pay a **Whole Lot** Later

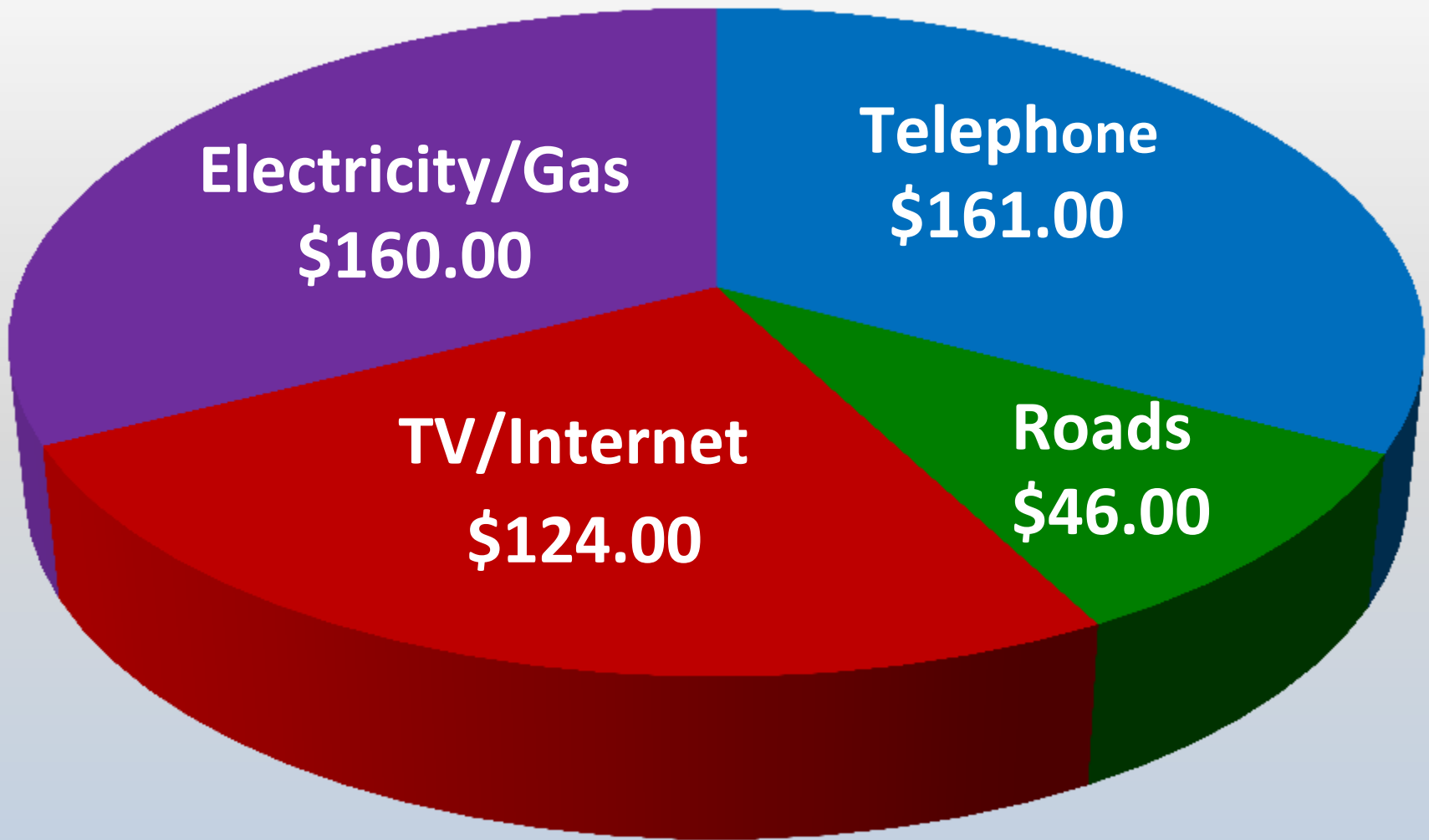


Reconstruction
\$1,500,000
per lane mile



Pay a Little Now or a Lot Later!

Average Monthly Household Expenditures



Funding



Challenges

Great amount of uncertainty at the federal level

State funds stagnant at best



Challenges

➤ **12th** largest system in the country

➤ **42nd** in highway revenue per mile.

➤ **\$9.3 billion** in needs

➤ **\$4.5 billion** in available revenue





Political Realities



Blue Ribbon
Committee
on Highway Finance
BlueRibbonHighways.com

FINAL REPORT

December 1, 2010

Presented to:

The Honorable Mike Beebe, Governor
House Interim Committee on Public Transportation
Senate Interim Committee on Transportation, Technology and Legislative Affairs
House Interim Committee on Revenue and Taxation
Senate Interim Committee on Revenue and Taxation
Arkansas Legislative Council
Arkansas State Highway Commission
Association of Arkansas Counties
Arkansas Municipal League





“... 70% of our highway, road and street funding comes from a consumption-based tax, while it is a national goal to reduce consumption. The trend... is simply a losing proposition. We’re moving backwards.”



Blue Ribbon
Committee
on Highway Finance
BlueRibbonHighways.com

- Reissue GARFIELD Bonds for Interstate Rehabilitation Program
- State Aid Programs for Cities
- Temporary One Percent General Sales Tax to Fund Multi-Year Construction Program
- Transfer Sales Tax on New and Used Vehicles, Auto Repair Parts and Services, Tires and Batteries

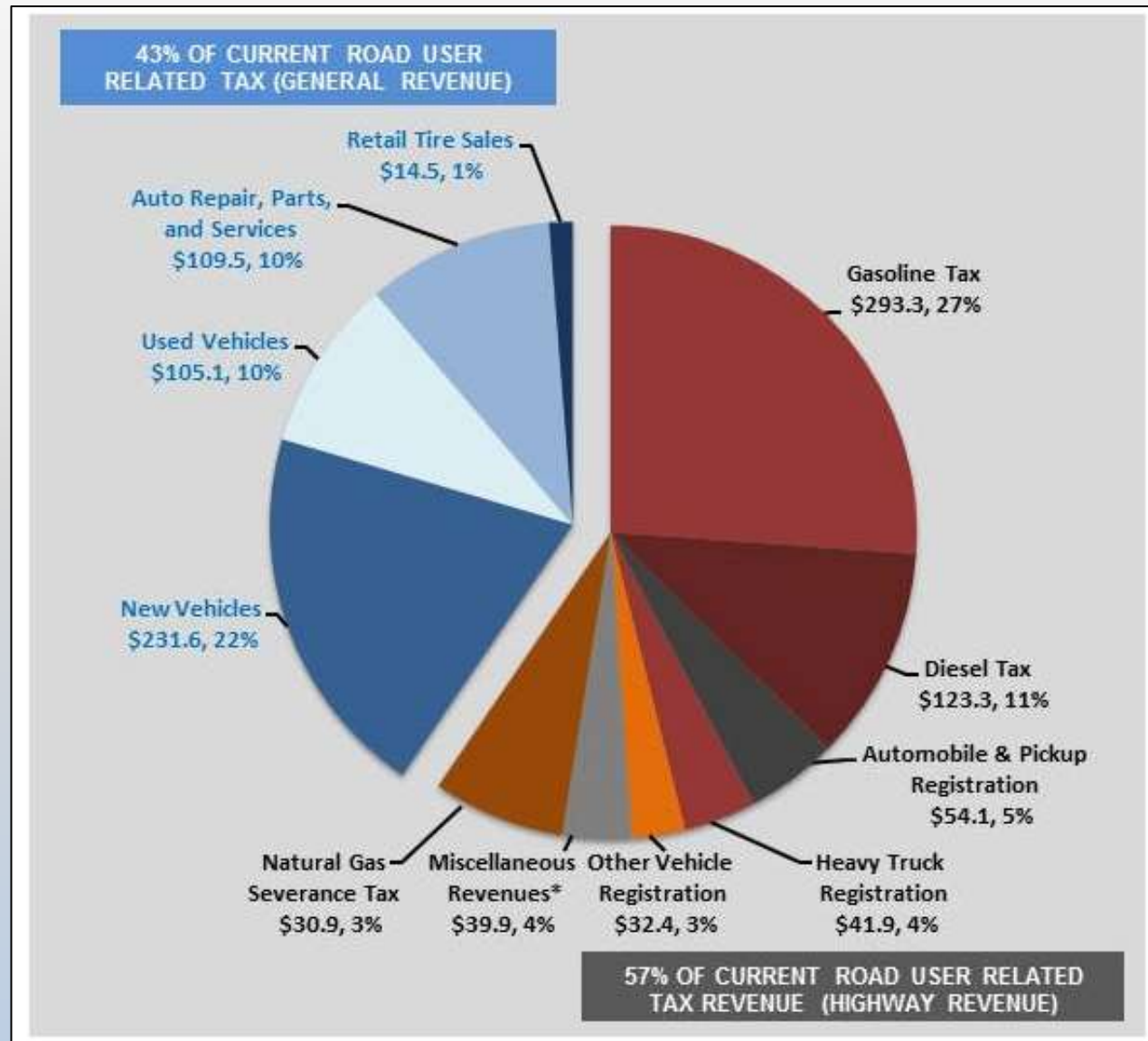
Road User Related Tax Revenue (SFY 2016)

Total Road User Revenue
\$1,076.5 Million

Distribution:

General Revenue
\$460.7 Million (43%)

Highway Revenue
\$615.9 Million (57%)



Political Process

1

- Legislator decides to sponsor a bill to create or revise a law

2

- Proposed legislation is drafted into a “bill” by the Bureau of Legislative Research and is filed by the primary sponsor who often seeks additional co-sponsors

3

- The bill is publically “read across the desk” and is assigned to a committee

Political Process

4

- Public Transportation Committee – House (20 members)
- House of Representatives (100 members)

5

- Transportation, Technology & Legislative Affairs Committee – Senate (8 members)
- Senate (35 members)

6

- Governor
- Voters (optional and rare)

HB 1418 Revenue Transfer

Transferred sales tax on
new and used vehicles to
the Highway Department fund phased in
over 10 years.



**FAILED TO
GET OUT OF
THE HOUSE
COMMITTEE**

**90
SPONSORS!!**

HB 1346 REVENUE TRANSFER

Transferred sales tax on new and used vehicles

to the Highway Department fund phased in over 10 years AND transferred the natural gas severance tax revenue from the Highway Department fund into a newly created higher education workforce development fund.



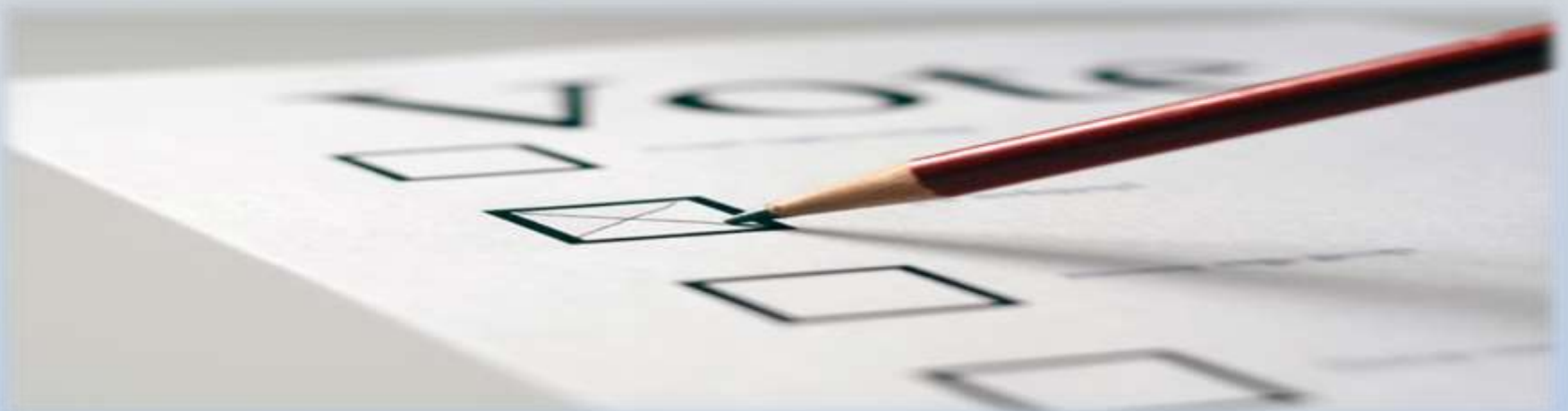
**PASSED THE
HOUSE
COMMITTEE**

**PULLED
BEFORE A
VOTE ON THE
HOUSE FLOOR**

□ Funding Targets

- ✓ Immediate: \$ 50 Million
- ✓ Short-term (0-3 years): \$110 Million
- ✓ Mid-term (3-5 years): \$250 Million
- ✓ Long-term (6-9 years): \$400 Million

All figures are annual amounts for state highways.



HB 1726 BOND ISSUE

Authorizes the State Highway Commission to issue bonds for

highway maintenance and improvements,

upon approval by voters in a statewide election.



**PASSED THE
HOUSE
COMMITTEE**

**FAILED ON THE
HOUSE FLOOR**



HB 1727 GAS TAX

Establishes **additional fuel sales tax** at the wholesale level to be levied, only if the State Highway Commission is authorized by a statewide vote to issue highway maintenance and improvement bonds.

HB 1726 BOND ISSUE

Authorizes the State Highway Commission to issue bonds for

highway maintenance and improvements,

upon approval by voters in a statewide election.

HB 1727 GAS TAX

Establishes **additional fuel sales tax** at the wholesale level to be levied, only if the State Highway Commission is authorized by a statewide vote to issue highway maintenance and improvement bonds.



**HOUSE
FOR – 38
AGAINST – 35
NOT VOTING - 27**



HB 1726 BOND ISSUE

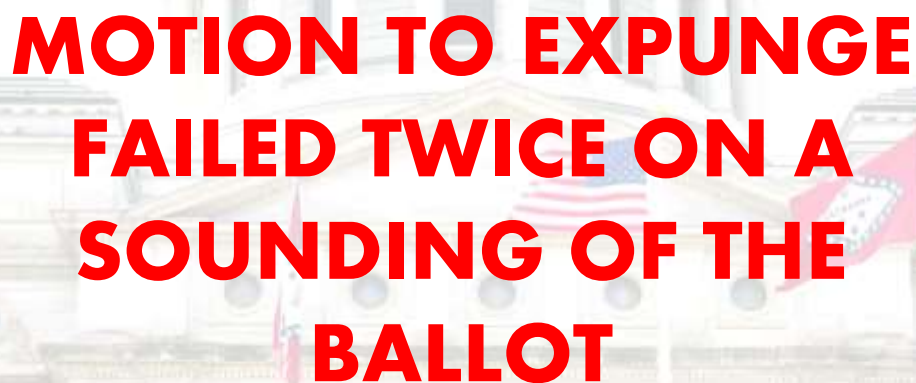
Authorizes the State Highway Commission to issue bonds for

highway maintenance and improvements,

upon approval by voters in a statewide election.

HB 1727 GAS TAX

Establishes **additional fuel sales tax** at the wholesale level to be levied, only if the State Highway Commission is authorized by a statewide vote to issue highway maintenance and improvement bonds.



**MOTION TO EXPUNGE
FAILED TWICE ON A
SOUNDING OF THE
BALLOT**



Laws are like sausages, it is better not to see them being made.



Political Realities

Those that respect the law
and love sausage should
watch neither being made.

Mark Twain



"As to the long-term solutions, it emphasizes that it is difficult to get a referral of this General Assembly out to the voters, and that I hope the leadership of our state and the business community and others **will look at an initiated act that might go on the ballot for a highway program,**" he said. "Otherwise, we'll continue to debate the long-term solution in future sessions."

Governor Asa Hutchinson



Arkansas Legislative Audit

- May 16, 2017 – Arkansas Legislative Audit - Review of Highway Funding
- Purpose:
 - ✓ To review and verify ARDOT information, estimates and calculations related to highway funding
- Report Objectives:
 - ✓ History of funding sources
 - ✓ History of construction and maintenance costs
 - ✓ State match needed for Federal funds
 - ✓ Additional State revenue to meet system preservation needs
- August 31, 2017 – Report Released



Arkansas State Highway Needs

Exhibit III

Arkansas Department of Transportation (ARDOT) Summary of Annual State Funds Needed to Meet Proposed Highway Construction Plan Over a 10-Year Period

Description	Additional Annual Revenues	Additional Annual Expenditures	Additional Annual Net
System Preservation			
Pavement			
Bridges			
Total System Preservation			
Capacity Relief			1,000,000
Safety Improvements			12,000,000
Maintenance			
Equipment upgrades	19,000,000	19,000,000	
Facilities upgrades	8,000,000		8,000,000
Intelligent Transportation System (ITS)	3,000,000		3,000,000
Total Maintenance	30,000,000	19,000,000	11,000,000
Totals	\$ 925,000,000	\$ 447,000,000	\$ 478,000,000

\$ 447,000,000

Note: Amounts shown are rounded.

ALA staff reviewed projected revenues and expenditures for fiscal years 2017 through 2020 ...for consistency and reasonableness when compared with prior years.

Arkansas State Highway Needs

Exhibit III

Arkansas Department of Transportation (ARDOT) Summary of Annual State Funds Needed to Meet Proposed Highway Construction Plan Over a 10-Year Period

Description			Additional Annual Revenues
System Preservation			
Pavement			
Bridges			
Total System Preservation			
Capacity Relief			2,000,000
Safety Improvements			12,000,000
Maintenance			
Equipment upgrades	19,000,000	19,000,000	
Facilities upgrades	8,000,000		8,000,000
Intelligent Transportation System (ITS)	3,000,000		3,000,000
Total Maintenance	30,000,000	19,000,000	11,000,000
Totals	\$ 925,000,000	\$ 447,000,000	\$ 478,000,000

\$ 478,000,000

Note: Amounts shown are rounded.

ALA staff reviewed supporting documentation obtained from ARDOT to verify that costs for the projects were reasonable, based on historical information.

Options for Generating Additional Revenue

Source	\$200 Million for Highways ⁽¹⁾	\$300 Million for Highways ⁽¹⁾	\$400 Million for Highways ⁽¹⁾
Fuel Tax	14.2¢	21.3¢	28.4¢
Sales Tax on Fuel (wholesale)	8.33%	12.5%	16.67%
Registration Fee	\$104	\$156	\$208
General Sales Tax ⁽²⁾	0.58%	0.87%	1.16%

¹ Amount shown is annual net to highways – after deduction for CFA/CSF and 30% to cities and counties.

² Transfer of 4.5% (“general” portion of statewide sales tax)

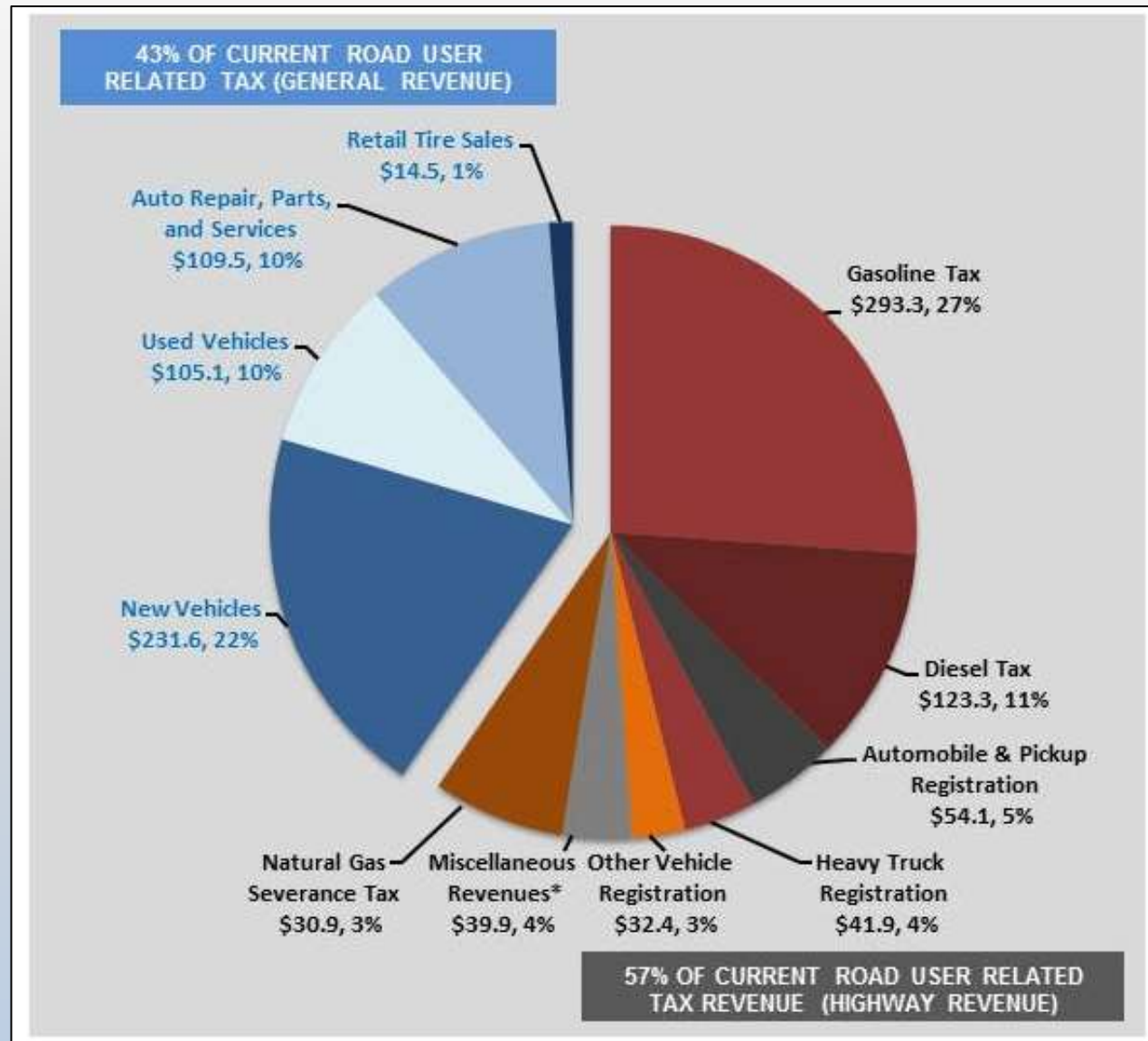
Road User Related Tax Revenue (SFY 2016)

Total Road User Revenue
\$1,076.5 Million

Distribution:

General Revenue
\$460.7 Million (43%)

Highway Revenue
\$615.9 Million (57%)





What's Next?



Your
TRANSPORTATION SYSTEM

Possible Initiated Act

CITIZENS OPINION SURVEY ON HIGHWAYS IN ARKANSAS

MAIL OR EMAIL RESPONSES TO:
 ARDOT
 Public Information
 P.O. Box 2261
 Little Rock, AR 72203
info@arkansashighways.com

Are you satisfied with the condition of the existing state highway system?

Yes No

What highways in your area need improvements, and what type of improvements do they need?

Priority 1: _____
 Priority 2: _____
 Priority 3: _____
 Priority 4: _____

If you want better highway conditions, the Arkansas Department of Transportation will need additional funds. Would you support a new highway program that would generate additional revenue?

Yes No

Which of the following sources do you recommend be utilized in obtaining additional funds (check all that apply):

- Increase in gas tax
- Increase in diesel tax
- Increase in sales tax (dedicated to highways)
- Increase in vehicle registration fees
- Add sales tax on wholesale price of motor fuels
- Transfer existing sales and use tax on motor vehicles and related parts and service (currently collected but not paid to highways)
- Other (please specify):

Would you be willing to sign a petition to put a highway revenue proposal on the 2018 general election ballot?

Yes No If Yes, what County do you live in? _____

(Optional) Contact Information: name, email, etc.

meeting name - date

Online Form Available Here:

www.Arkansashighways.com

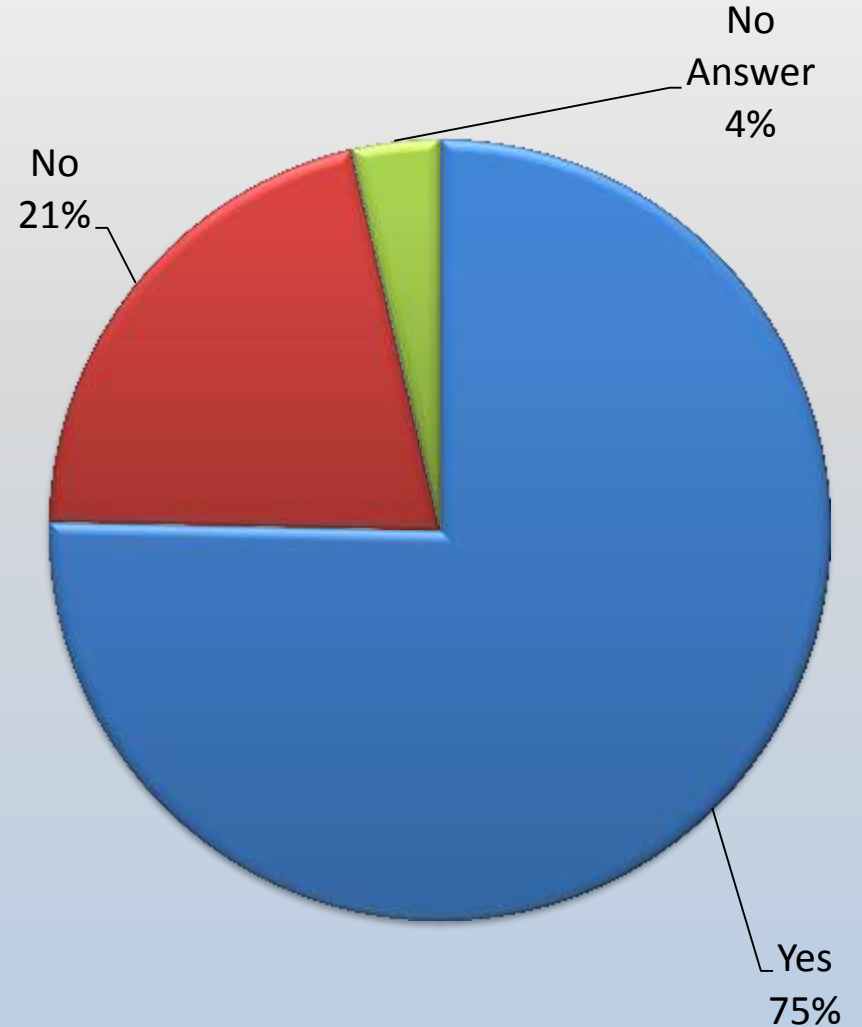


Survey Results

Are you satisfied with the condition of the existing highway system?

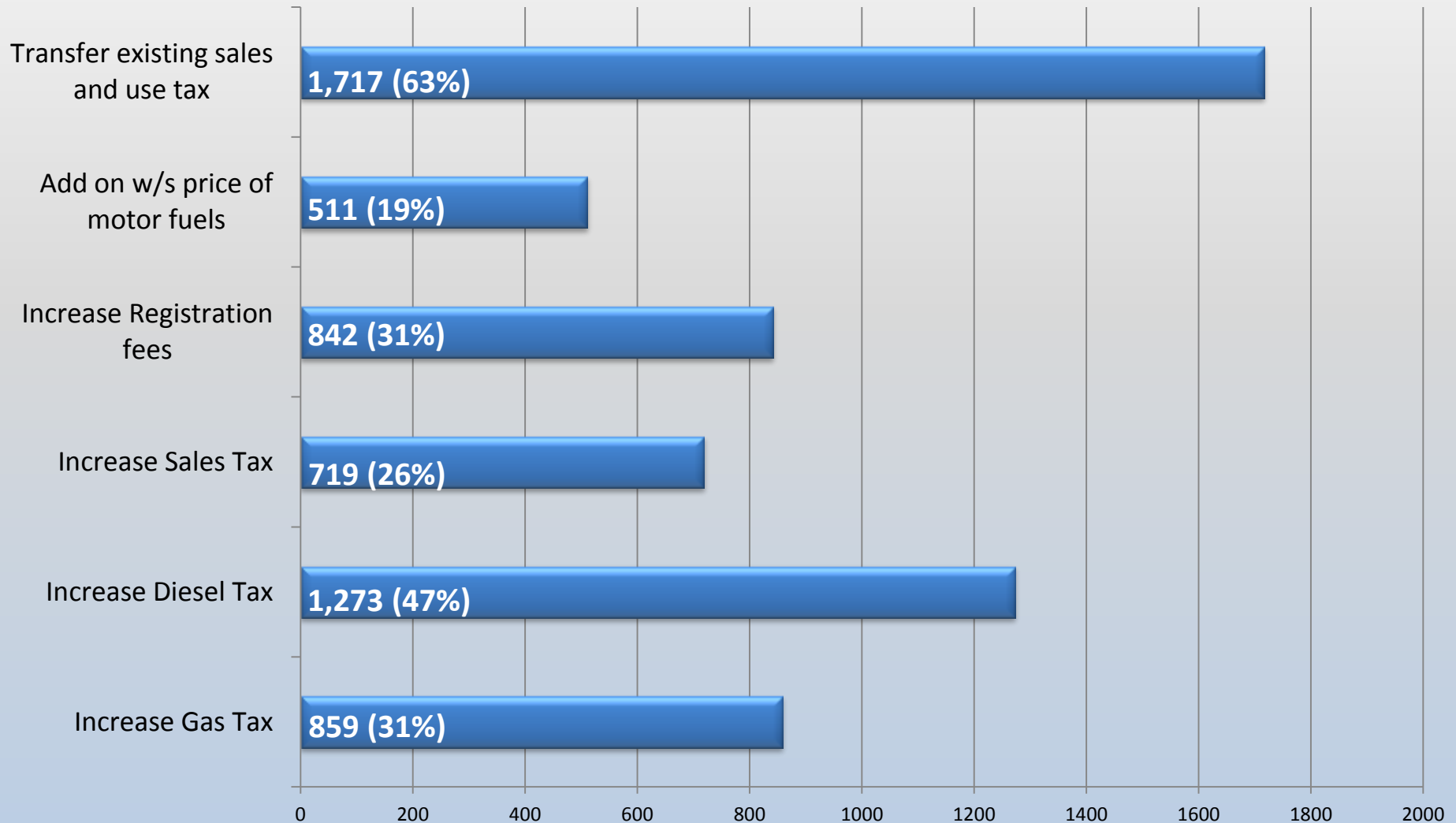


Would you support a new highway program that would generate additional revenue?



Survey Results

Which of the following sources do you recommend be utilized in obtaining additional funds?



- ARDOT.gov
- ConnectingArkansasProgram.com
- Vimeo.com/myARDOT
- IDriveArkansas.com
- Twitter.com @myARDOT



@myARDOT



Questions?

